

Wright Minimix Ltd
2 St Ivel Way
Warmley
Bristol
BS30 8TY
Tel: 01179 582090
Fax: 01179 671673
sales@wrightminimix.co.uk
www.wrightminimix.co.uk

Wright Minimix Ltd

Your complete answer to Concrete pumping



5 Section 41m

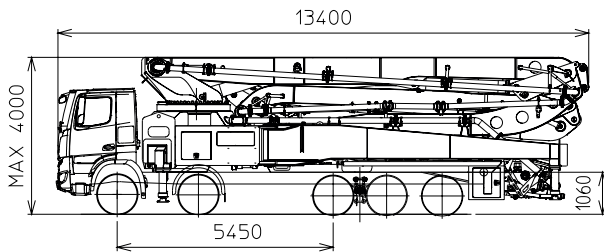
K60H

TRUCK-MOUNTED CONCRETE BOOM PUMP

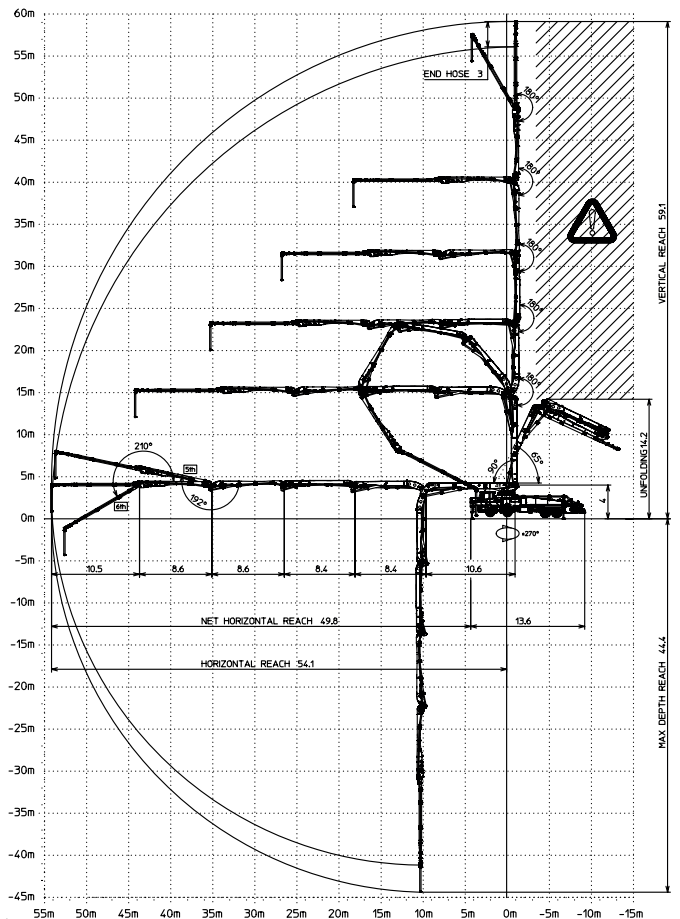
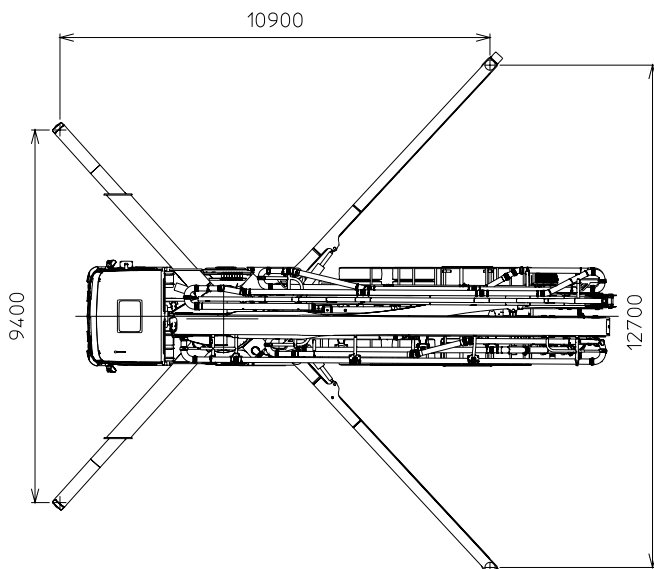
| | |
|--------------|-------------|
| Placing boom | B6RRZ 60/55 |
| Pumping unit | HP1808ECX |
| Driven by | PTO |
| Chassis | 4-5 axles |



Dimensions



Dimensions vary according to truck assembly



K60H

Main features

- Placing boom 60/55, 6 sections, pipeline diameter 125 mm, "RRZ" folding system
- 4th, 5th, 6th boom sections made of light and resistant CIFA CARBOTECH composite material. 1st, 2nd and 3rd sections made of high strength steel
- Assembly on 4 or 5 axles truck
- Fully hydraulic outrigger controls on both sides of the truck
- Front "X" style diagonal outriggers with double telescopic opening and swing-out rear outriggers
- "Load Sensing" proportional boom control
- Concrete flow rate regulator
- Safety device on opening of the concrete discharge hatch and hopper grid
- HP pumping unit with closed circuit and reversal flow: superb performances, high pressures and output, high reliability and easy and reduced maintenance; 10 inches S valve

Standard equipment

- 2 Proportional radio control with two boom movement speed, synthesizer for automatic frequency search, 8 position joystick and concrete flow rate regulator. 20 mt cable supplied.
- Remote controlled electric vibrator placed on the concrete hopper grid
- Centralized lubrication system for pumping unit
- Hard plastic outrigger support plates with housing
- Rear light on hopper and stabilization area
- Level readers for stabilization control
- Accessories for cleaning and pipe washing
- Double thickness concrete pipes, in high resistant steel - CIFA Long Life Pipes
- Long life wear plate and cutting ring with hard carbide inserts
- Medium pressure water pump (50l/50bar)
- Fiberglass hopper covering

Machine management system

- **Smart@nic** machine management system with LCD display:
 - machine diagnostic system
 - integrated stability control and data logger
 - integrated capsense panel

Main Optionals

- High pressure water pump
- Air compressor for pipeline cleaning
- Centralized lubrication system for placing boom
- Air pipeline for placing boom
- Separated emergency engine kit for independent control of the hopper mixer, concrete pumping unit, boom and water pump
- Concrete shut-off valve
- Rear camera for easy manoeuvring

TRUCK-MOUNTED CONCRETE BOOM PUMP

| | |
|---------------------|-------------|
| Placing boom | B6RRZ 60/55 |
| Pumping unit | HP1808ECX |
| Driven by | PTO |
| Chassis | 4-5 axles |

Pumping unit technical data

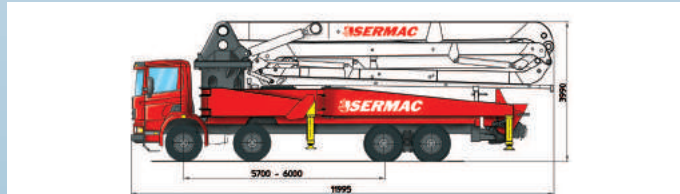
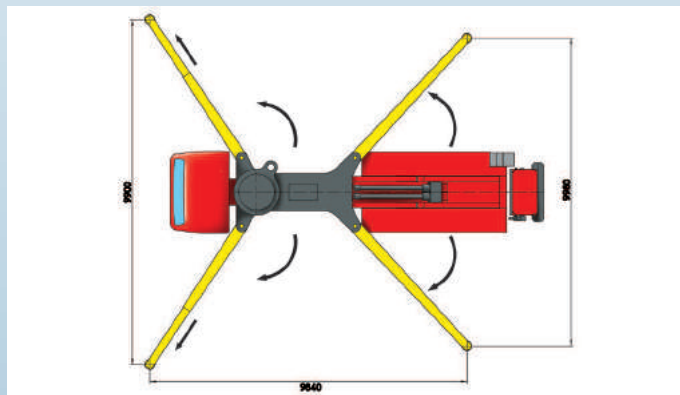
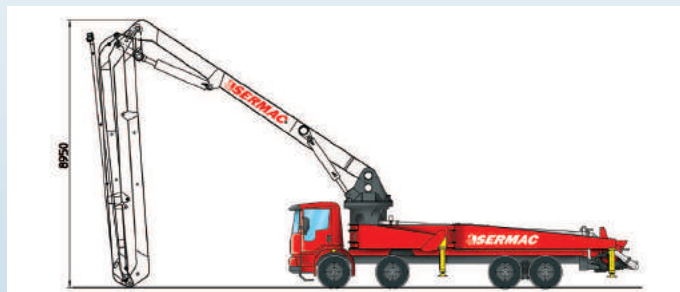
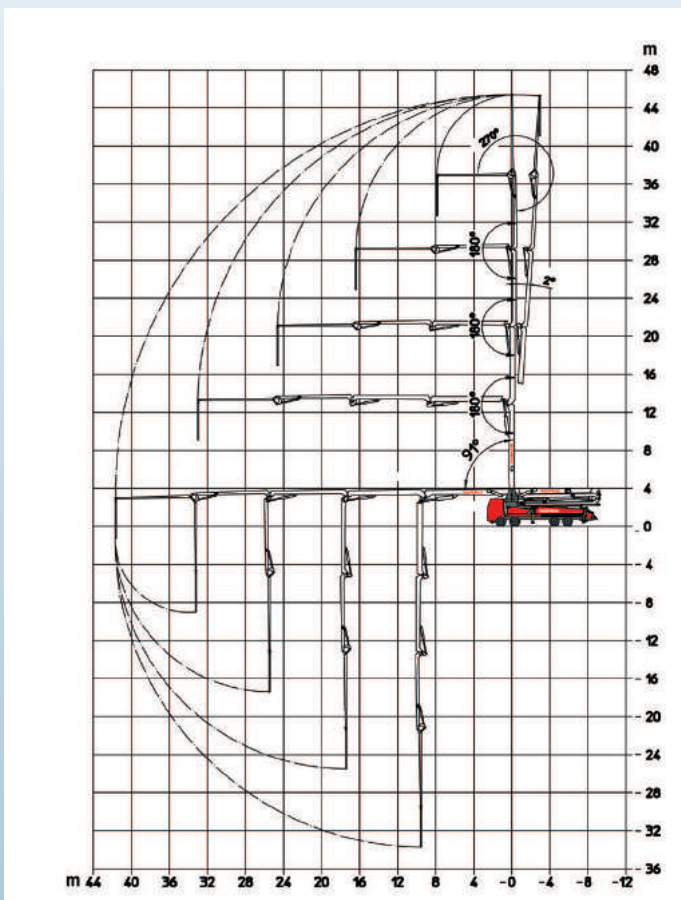
| Model | | HP1808ECX |
|-------------------------------------|------------------------|-----------|
| Max. theoretical output | <i>m³/h</i> | 180 |
| Max. pressure on concrete | <i>bar</i> | 83 |
| Max. numbers of cycles per min. | <i>nr.</i> | 27 |
| Concrete cylinders (diam. x stroke) | <i>mm</i> | 260x2100 |
| Concrete hopper capacity | <i>l</i> | 600 |
| Hydraulic circuit | | closed |

Placing boom technical data

| Model | | B6RRZ 60/55 |
|--|-----------|-------------|
| Pipeline diameter | <i>mm</i> | 125 |
| Max. vertical reach | <i>m</i> | 59,1 |
| Max. horizontal distance (from center of slewing axis) | <i>m</i> | 54,1 |
| Net horizontal reach | <i>m</i> | 49,8 |
| Min. unfolding height | <i>m</i> | 14,2 |
| Section numbers | | 6 |
| 1st section opening angle | | 90° |
| 2nd, 3rd, 4th section opening angle | | 180° |
| 5th section opening angle | | 192° |
| 6th section opening angle | | 210° |
| Rotating angle | | ± 270° |
| End hose length | <i>m</i> | 3 |

Technical data and characteristics subject to modifications without notice

SCORPIO 5R47



GRUPE DE POMPAGE › données techniques PUMPING UNIT › SPECIFICATIONS

| | | Standard SCL 130 | SCL 150 | SCL 185 |
|---|---|-------------------------------------|-------------------------------------|-------------------------------------|
| DÉBIT MAXIMAL THÉORIQUE (MAX)* CÔTÉ TIGE | TH. CONCRETE OUTPUT (MAX.)* ROD SIDE | 134 m ³ /h (175 cy/h) | 150 m ³ /h (196 cy/h) | 185 m ³ /h (242 cy/h) |
| PRESSION SUR BÉTON (MAX)* CÔTÉ TIGE | CONCRETE PRESSURE (MAX.)* ROD SIDE | 61 bar 884 p.s.i. | 76 bar 1102 p.s.i. | 61 bar 884 p.s.i. |
| CYCLES PAR MIN. (MAX)* CÔTÉ TIGE | NO. OF STROKES (MAX.)* ROD SIDE | 27 min | 30 min | 37 min |
| ALÉSAGE CYLINDRES BÉTON | PISTON DIAMETER | 230 mm | 230 mm | 230 mm |
| COURSE PISTONS | STROKE LENGTH | 2000 mm | 2000 mm | 2000 mm |
| PUISSANCE PAR | POWERED BY | PTO | PTO | PTO |
| CAPACITÉ TRÉMIE | CONCRETE HOPPER | 600 l | 600 l | 600 l |

FLÈCHE › données techniques BOOM › SPECIFICATIONS

| | | 5R47 |
|---------------------------|----------------------|----------------------------------|
| NOMBRE D'ÉLÉMENTS | NO. SECTIONS | 5 |
| TYPE D'OUVERTURE | FOLDING TYPE | R |
| MAX EXTENSION VERTICALE | MAX VERTICAL REACH | 47 m |
| MAX EXTENSION HORIZ. | MAX HORIZONTAL REACH | 42,1 m |
| MAX EXTENSION VERS LE BAS | MAX DOWNWARD REACH | -33,5 m |
| OUVERTURE MIN. | UNFOLDING HEIGHT | 9000 mm |
| ROTATION | ROTATION | 370° |
| ANGLES D'OUVERTURE | SECTION ARTICULATION | 91° - 180° - 180° 180° - 263° |
| TUYAUTERIE | CONCRETE PIPELINE | Ø 125 mm |

*Cannot be reach simultaneously
*Ils ne peuvent pas être obtenus simultanément

› Also available different models: please, don't exitate to contact our offices.
› Des autres modèles sont aussi diponibles: pour information contacter nos bureaux.

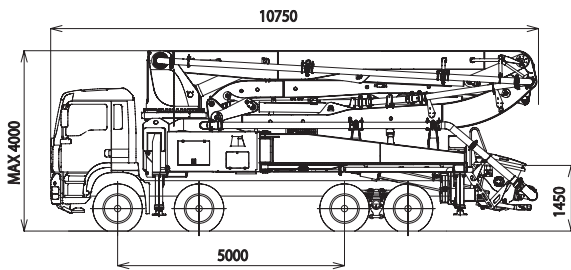
K42L

TRUCK-MOUNTED CONCRETE BOOM PUMP

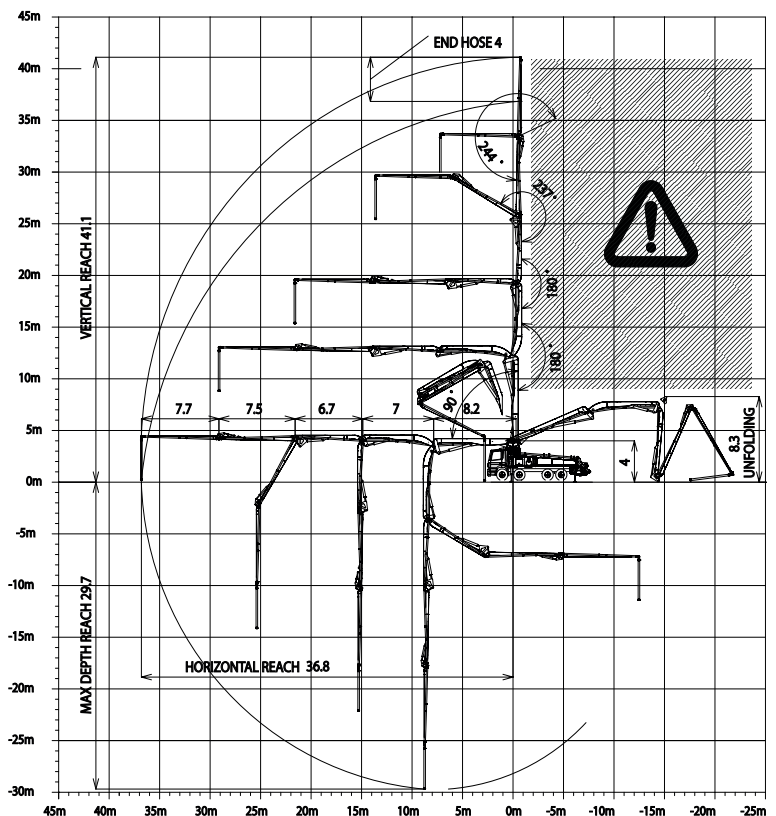
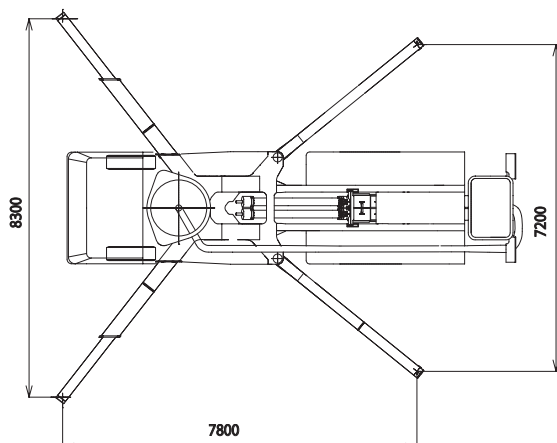
| | |
|--------------|----------------------------------|
| Placing boom | B5RZ 42/38 |
| Pumping unit | HP1808ECX HP1608EC HP1606H |
| Driven by | PTO |
| Chassis | 4 axles |



Dimensions



Dimensions varying according to truck assembly



K42L

Main features

- Advantageous assembling on standard 4 axles chassis
- Self-supporting frame, torsion free, FEM designed
- Placing boom B5RZ 42/37, 5 sections, pipeline diameter 125 mm, "RZ" folding system
- Fully hydraulic outrigger controls on both sides of the truck
- Front "X" style diagonal outriggers with double telescopic opening and swing-out rear outriggers for a quick and easy set-up also in narrow areas
- "Load Sensing" proportional boom control
- "BFC" Best-Flex Cifa supporting system allowing just one man to change delivery pipeline easily, quickly and safe
- Concrete flow rate regulator
- Safety device on opening inspection hatch
- HP pumping unit with closed circuit and reversal flow: superb performances, high pressures and output, high reliability and easy and reduced maintenance; 9 inches S valve (HP1608EC) or 10 inches S valve (HP1808ECX)
alternatively:
HP pumping system with open circuit: (HP1606H) smooth, continuous and easy pumping, combined with high reliability

Standard equipment

- 2 Proportional radio control with two boom movement speed, synthesizer for automatic frequency search, 8 position joy stick and concrete flow rate regulator. 20 mt cable
- Emergency control pad for pumping unit HP-C
- Remote controlled electric vibrator placed on the concrete hopper grid
- Centralized lubrication system for pumping unit
- Automatic oil lubrication system for pumping pistons on HP-C
- Additional manual lubrication system for pumping unit
- Hard plastic outrigger support plates with relative housing
- Rear light on hopper
- Level readers for stabilization control
- Accessories for cleaning and pipes washing
- Double thickness concrete pipes, in high resistant steel and insert carbide chrome - CIFA Long Life Pipes
- Fiber glass hopper covering

Main optionals

- **L-tronic™**
- **Smartronic™**
- High pressure water pump
- Air compressor for pipeline cleaning
- Centralized lubrication system for placing boom
- Air pipeline for placing boom
- Separated emergency engine kit for independent control of the hopper mixer, concrete pumping unit, boom and water pump

TRUCK-MOUNTED CONCRETE BOOM PUMP

| | |
|---------------------|----------------------------------|
| Placing boom | B5RZ 42/38 |
| Pumping unit | HP1808ECX HP1608EC HP1606H |
| Driven by | PTO |
| Chassis | 4 axles |

Pumping unit technical data

| Model | | HP1808ECX | HP1608EC | HP1606H |
|----------------------------------|-------------|-----------|----------|----------|
| Max. theoretical output | <i>m³/h</i> | 180 | 160 | 160 |
| Max. pressure on concrete | <i>bar</i> | 83 | 80 | 53 |
| Max. numbers of cycles per min. | <i>nr.</i> | 27 | 31 | 30 |
| Conc. cylinders (diam. x stroke) | <i>mm</i> | 260x2100 | 230x2100 | 230x2100 |
| Concrete hopper capacity | <i>l</i> | 600 | 550 | 550 |
| Hydraulic circuit | | closed | closed | open |

Placing boom technical data

| Model | | B5RZ 42/37 |
|--|-----------|------------|
| Pipeline diameter | <i>mm</i> | 125 |
| Max. vertical reach | <i>m</i> | 41,1 |
| Max. horizontal distance (from center of slewing axis) | <i>m</i> | 36,8 |
| Min. unfolding height | <i>m</i> | 8,8 |
| Section numbers | | 5 |
| 1st section opening angle | | 90° |
| 2nd section opening angle | | 180° |
| 3rd section opening angle | | 180° |
| 4th section opening angle | | 237° |
| 5th section opening angle | | 244° |
| Rotating angle | | 370° |
| End hose length | <i>m</i> | 4 |

Technical data and characteristics subject to modifications without notice

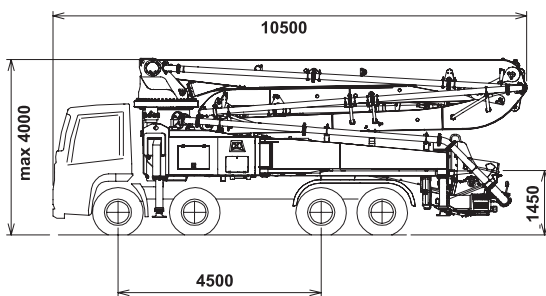
K41L XRZ

TRUCK-MOUNTED CONCRETE BOOM PUMP

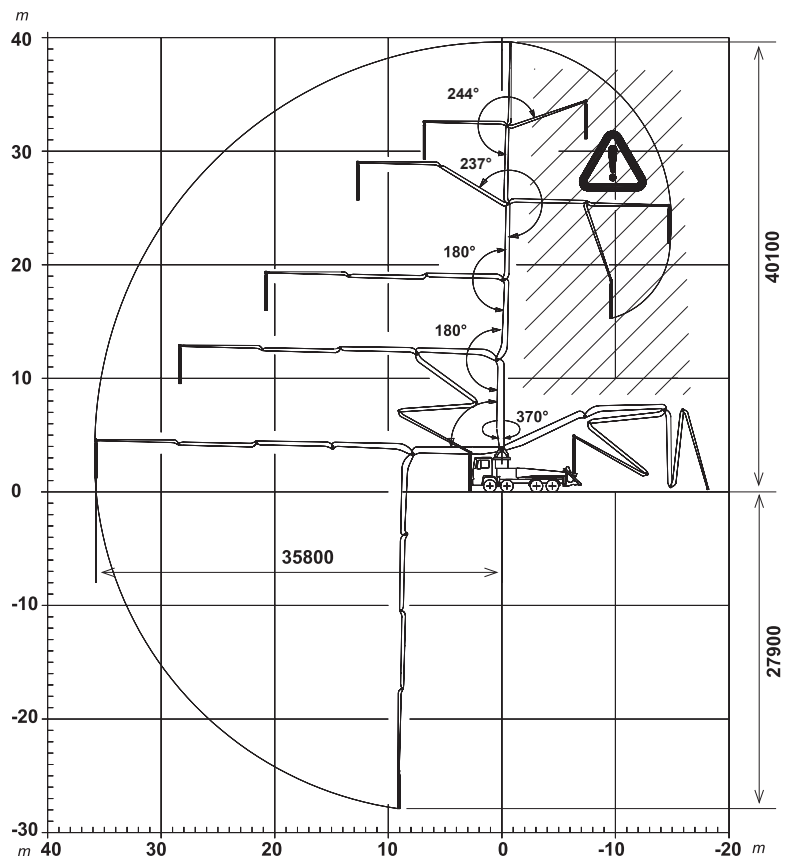
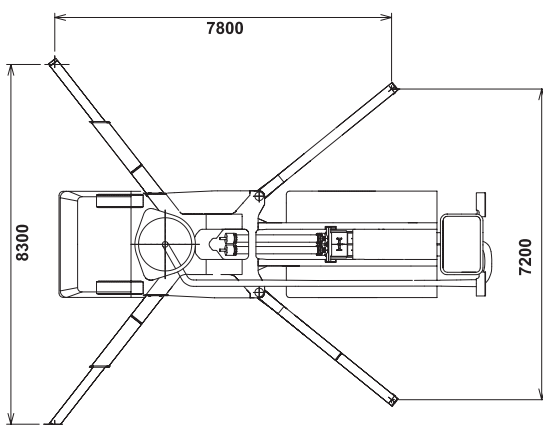
| | |
|--------------|-----------------------------|
| Placing boom | B5RZ 41/36 |
| Pumping unit | HPG 1808/1113 IF9 |
| | HPG 1408 IF9 PA 1506/909 F8 |
| Driven by | PTO |
| Chassis | 4 assi |



Dimensions



Dimensions varying according to truck assembly



K41L XRZ

Main features

- Advantageous assembling on standard 4 axles chassis
 - Self-supporting frame, torsion free, FEM designed
 - Placing boom B5RZ 41/36, 5 sections, pipeline diameter 125 mm, "RZ" folding system
 - Fully hydraulic outrigger controls on both sides of the truck
 - Front "X" style diagonal outriggers with double telescopic opening and swing-out rear outriggers for a quick and easy set-up also in narrow areas
 - "Load Sensing" proportional boom control
 - "BFC" Best-Flex Cifa supporting system allowing just one man to change delivery pipeline easily, quickly and safe
 - Concrete flow rate regulator
 - Safety device on opening inspection hatch
 - HPG-IF pumping unit with closed circuit and reversal flow: superb performances, high pressures and output, high reliability and easy and reduced maintenance; 9 inches S valve *alternatively*.
- F8 pumping system with open circuit: smooth, continuous and easy pumping, combined with high reliability

Standard equipment

- 2 Proportional radio control with two boom movement speed, synthesizer for automatic frequency search, 8 position joy stick and concrete flow rate regulator. 20 mt cable
- Emergency control pad for pumping unit HPG 1808/1113 IF
- Remote controlled electric vibrator placed on the concrete hopper grid
- Centralized lubrication system for pumping unit
- Automatic oil lubrication system for pumping pistons on HPG 1808/1113IF
- Additional manual lubrication system for pumping unit
- Hard plastic outrigger support plates with relative housing
- Rear light on hopper
- Level readers for stabilization control
- Accessories for cleaning and pipes washing

Optional

- Double thickness concrete pipes, in high resistant steel
- High pressure water pump
- Air compressor for pipeline cleaning
- Centralized lubrication system for placing boom
- Air pipeline for placing boom
- Aluminium hopper covering
- Separated emergency engine kit for independent control of the hopper mixer, concrete pumping unit, boom and water pump
- Pumping unit Electronic version: HPG 1408 IF9 EPC

TRUCK-MOUNTED CONCRETE BOOM PUMP

| | |
|---------------------|--|
| Placing boom | B5RZ 41/36 |
| Pumping unit | HPG 1808/1113 IF9 HPG 1408 IF9 PA 1506/909 F8 |
| Driven by | PTO |
| Chassis | 4 assi |

Pumping unit technical data

| Model | | HPG 1808/1113 IF9 | HPG 1408 IF9 | PA 1506/909 F8 |
|----------------------------------|-------------|-------------------|--------------|----------------|
| Max. theoretical output | <i>m³/h</i> | 179/105 | 140 | 150/90 |
| Max. pressure on concrete | <i>bar</i> | 76/130 | 80 | 53/95 |
| Max. numbers of cycles per min. | <i>nr.</i> | 36/21 | 28 | 30/17 |
| Conc. cylinders (diam. x stroke) | <i>mm</i> | 230x2000 | 230x1500 | 230x2000 |
| Concrete hopper capacity | <i>l</i> | 650 | 600 | 550 |
| Hydraulic circuit | | closed | closed | open |

Placing boom technical data

| Model | B5RZ 41/36 | |
|--|------------|------|
| Pipeline diameter | <i>mm</i> | 125 |
| Max. vertical reach | <i>m</i> | 40,1 |
| Max. horizontal distance (from center of slewing axis) | <i>m</i> | 35,8 |
| Min. unfolding height | <i>m</i> | 7,8 |
| Section numbers | | 5 |
| 1st section opening angle | | 90° |
| 2nd section opening angle | | 180° |
| 3rd section opening angle | | 180° |
| 4th section opening angle | | 237° |
| 5th section opening angle | | 244° |
| Rotating angle | | 370° |
| End hose length | <i>m</i> | 4 |

Technical data and characteristics subject to modifications without notice

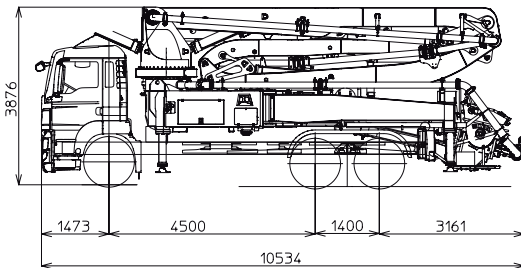
K39H XRZ

TRUCK-MOUNTED CONCRETE BOOM PUMP

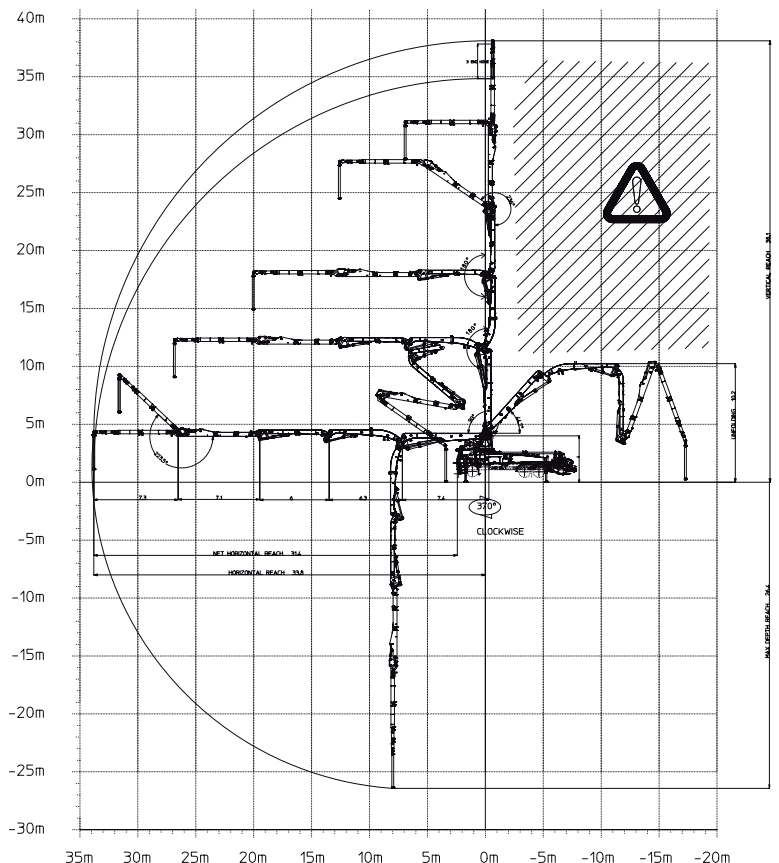
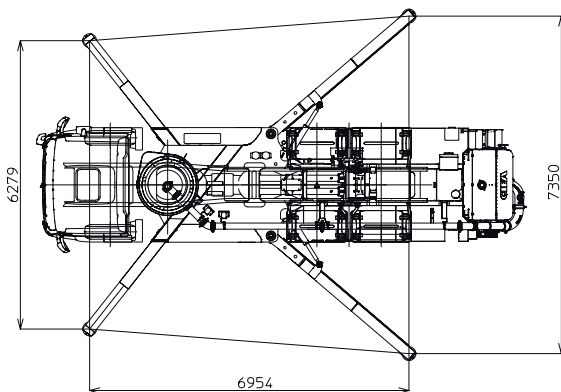
| | |
|--------------|------------------|
| Placing boom | B5HRZ 39/35 |
| Pumping unit | HPG 1408 IF9 EPC |
| Driven by | PTO |
| Chassis | 3 - 4 axles |



Dimensions



Dimensions varying according to truck assembly



K39H XRZ

Main features

- Placing boom B5HRZ 39/35, 5 sections, pipeline diameter 125 mm, "RZ" folding system
- 4th and 5th boom sections made of light and resistant CIFA CARBOTECH composite material. 1st, 2nd and 3rd sections made of high strength steel
- Advantageous assembling on standard 3 axles chassis
- Fully hydraulic outrigger controls on both sides of the truck
- Front "X" style diagonal outriggers with double telescopic opening and swing-out rear outriggers for a quick and easy set-up also in narrow areas
- "Load Sensing" proportional boom control
- Concrete flow rate regulator
- Safety device on opening inspection hatch
- HPG-IF EPC pumping unit with electronic closed circuit and reverse flow: superb performances, high pressures and output, smooth pumping and low noise. Easy and reduced maintenance; 9 inches S valve

Standard equipment

- 2 Proportional radio control with two boom movement speed, synthesizer for automatic frequency search, 8 position joy stick and concrete flow rate regulator. 20 mt cable
- Emergency control pad for pumping unit HPG 1408
- Remote controlled electric vibrator placed on the concrete hopper grid
- Centralized lubrication system for pumping unit
- Automatic oil lubrication system for pumping pistons on HPG 1408
- Additional manual lubrication system for pumping unit
- Hard plastic outrigger support plates with relative housing
- Rear light on hopper
- Level readers for stabilization control
- Accessories for cleaning and pipes washing
- Double thickness concrete pipes, in high resistant steel - CIFA Long Life Pipes
- Long life wear plate and cutting ring with hard carbide inserts
- Aluminium hopper covering

Machine management system

- **Smartronic** Machine management system with LCD display:
 - machine diagnostic system
 - integrated stability control and data logger **K-TRONIC**
 - integrated EPC pumping unit management
 - integrated capsense panel

Optional

- High pressure water pump
- Air compressor for pipeline cleaning
- Centralized lubrication system for placing boom
- Air pipeline for placing boom
- Separated emergency engine kit for independent control of the hopper mixer, concrete pumping unit, boom and water pump

TRUCK-MOUNTED CONCRETE BOOM PUMP

| | |
|---------------------|------------------|
| Placing boom | B5HRZ 39/35 |
| Pumping unit | HPG 1408 IF9 EPC |
| Driven by | PTO |
| Chassis | 3 - 4 axles |

Pumping unit technical data

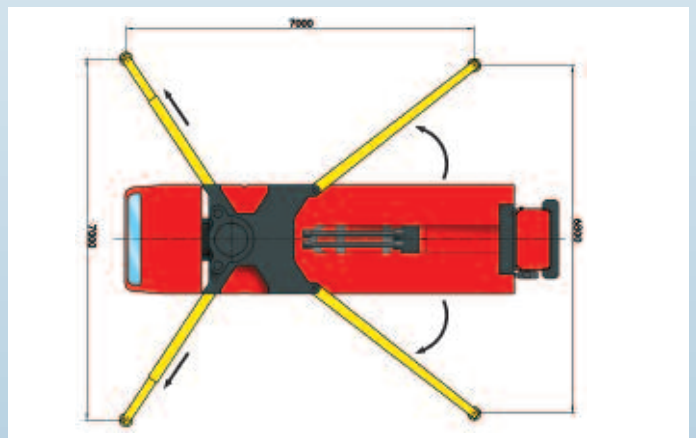
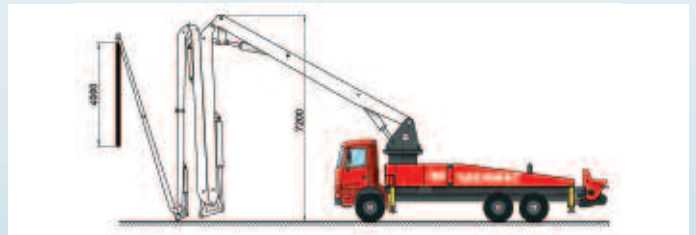
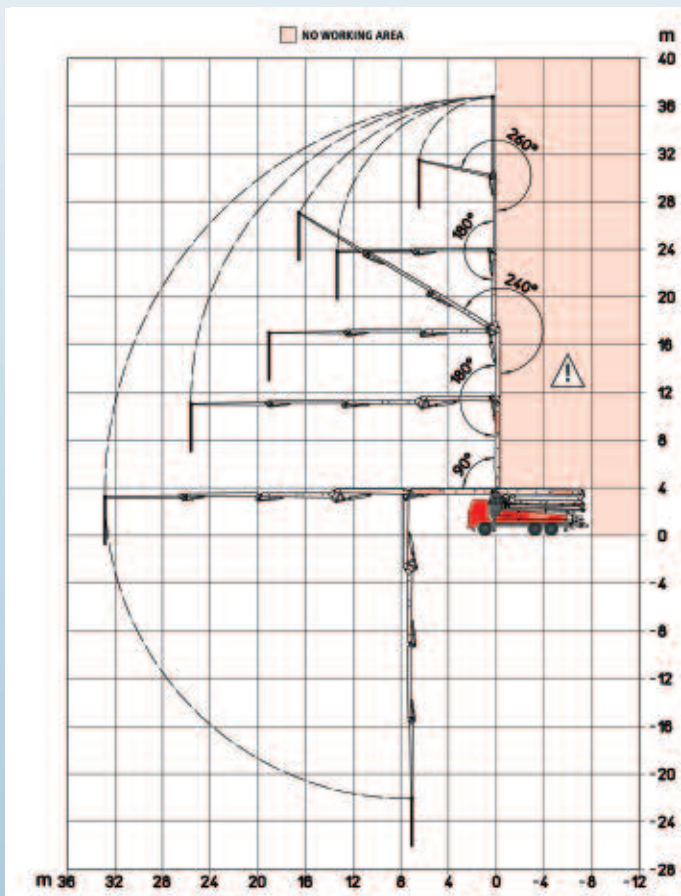
| Model | | HPG 1408 IF9 EPC |
|-----------------------------------|------------------------|------------------|
| Maximum theoretical output | <i>m³/h</i> | 140 |
| Maximum pressure on concrete | <i>bar</i> | 80 |
| Maximum number of cycles per min. | <i>nr.</i> | 28 |
| Conc. cylinders (diam. x stroke) | <i>mm</i> | 230x2000 |
| Concrete hopper capacity | <i>l</i> | 600 |
| Hydraulic circuit | | closed |

Placing boom technical data

| Model | | B5HRZ 39/35 |
|---|-----------|-------------|
| Pipeline diameter | <i>mm</i> | 125 |
| Maximum vertical reach | <i>m</i> | 38,1 |
| Maximum horizontal distance (from center of slewing axis) | <i>m</i> | 33,8 |
| Minimum unfolding height | <i>m</i> | 10,2 |
| Section numbers | | 5 |
| 1st section opening angle | | 90° |
| 2nd section opening angle | | 180° |
| 3rd section opening angle | | 180° |
| 4th section opening angle | | 236° |
| 5th section opening angle | | 223° |
| Rotating angle | | 370° |
| End hose length | <i>m</i> | 3 |

Technical data and characteristics subject to modifications without notice

EXTREME 5Z37



GRUPPO POMPANTE › dati tecnici PUMPING UNIT › SPECIFICATIONS

| | | SCL 130A | SCL 150AHP | SCL 185A |
|--|-------------------------------------|----------------------------------|----------------------------------|----------------------------------|
| PORTATA MASSIMA TEORICA (MAX)* LATO STELO | TH. CONCRETE OUTPUT (MAX)* ROD SIDE | 130 m ³ /h (170 cy/h) | 149 m ³ /h (195 cy/h) | 184 m ³ /h (241 cy/h) |
| PRESSIONE SUL CALCESTRUZZO (MAX)* LATO STELO | CONCRETE PRESSURE (MAX)* ROD SIDE | 61 bar 884 p.s.i. | 76 bar 1102 p.s.i. | 61 bar 884 p.s.i. |
| CORSE AL MINUTO (MAX)* LATO STELO | NO. OF STROKES (MAX)* ROD SIDE | 27 min | 30 min | 37 min |
| DIAMETRO PISTONI | PISTON DIAMETER | 230 mm | 230 mm | 230 mm |
| CORSA PISTONI | STROKE LENGTH | 2000 mm | 2000 mm | 2000 mm |
| POTENZA TRAMITE | POWERED BY | PTO | PTO | PTO |
| CAPACITÀ TRAMOGGIA | CONCRETE HOPPER | 600 l | 600 l | 600 l |

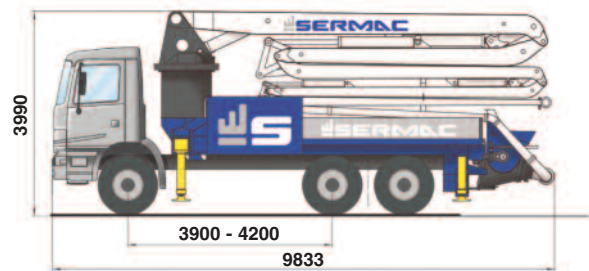
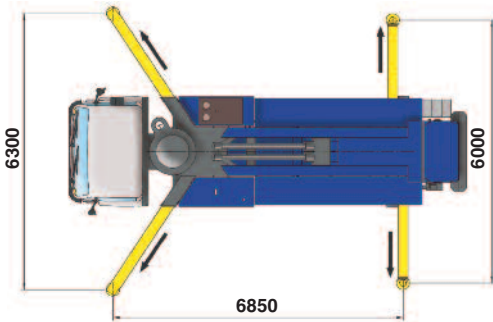
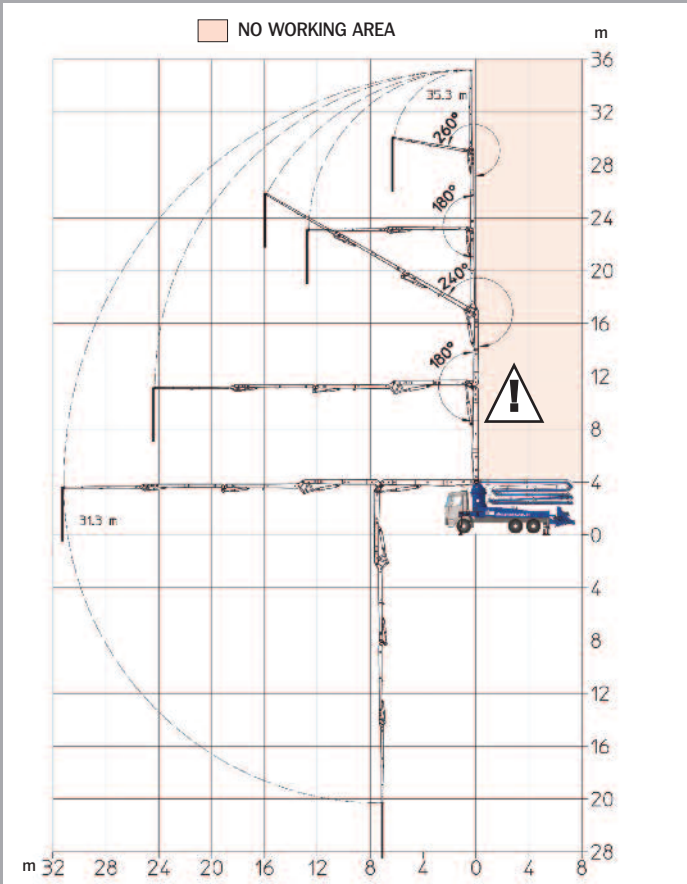
BRACCIO › dati tecnici BOOM › SPECIFICATION

| | | 5Z37 |
|--------------------------|----------------------|----------------------------------|
| N. SEZIONI | NO. SECTIONS | 5 |
| TIPO APERTURA | FOLDING TYPE | Z |
| MAX ALTEZZA VERTICALE | MAX VERTICAL REACH | 37 m |
| MAX ESTENSIONE ORIZZ. | MAX HORIZONTAL REACH | 33 m |
| MAX PROFONDITÀ DI LAVORO | MAX DOWNWARD REACH | -26 m |
| MIN. SPAZIO DI APERTURA | UNFOLDING HEIGHT | 7200 mm |
| ROTAZIONE | ROTATION | 370° |
| ANGOLI DI APERTURA | SECTION ARTICULATION | 97° - 180° - 240° 180° - 260° |
| TUBAZIONE CLS | CONCRETE PIPELINE | Ø 125 mm |

*Non possono essere ottenuti simultaneamente
*Cannot be reach simultaneously

› Disponibili anche versioni differenti: per eventuali informazioni contattare i nostri uffici.
› Also available different models: please, don't exitate to contact our offices.

ZENITH 5Z36



PUMPING UNIT - specifications

| | SCL130A | SCL150AHP | SCL185A |
|--|------------------------------------|-------------------------------------|-------------------------------------|
| TH. CONCRETE OUTPUT (MAX)* ROD SIDE | 130 m ³ /h (170cy/h) | 149 m ³ /h (195 cy/h) | 184 m ³ /h (241 cy/h) |
| CONCRETE PRESSURE (MAX)* ROD SIDE | 61 bar 884 p.s.i. | 76 bar 1102 p.s.i. | 61 bar 884 p.s.i. |
| NUMBER OF STROKES (MAX)* ROD SIDE | 27 min | 30 min | 37 min |
| PISTON DIAMETER | 230 mm | 230 mm | 230 mm |
| STROKE LENGTH | 2000 mm | 2000 mm | 2000 mm |
| POWERED BY | PTO | PTO | PTO |
| CONCRETE HOPPER | 600 l | 600 l | 600 l |

BOOM - specifications

| | 5Z36 |
|----------------------|----------------------------------|
| NUMBER OF SECTIONS | 5 |
| FOLDING TYPE | Z |
| MAX VERTICAL REACH | 35.3 m |
| MAX HORIZONTAL REACH | 31.3 m |
| MAX DOWNWARD REACH | -24.7 m |
| UNFOLDING HEIGHT | 6.75 m |
| ROTATION | 370° |
| SECTION ARTICULATION | 90° - 180° - 240° 180° - 260° |
| CONCRETE PIPELINE | Ø 125 mm |

*Cannot be reached simultaneously

Also available different models: please, don't hesitate to contact our offices

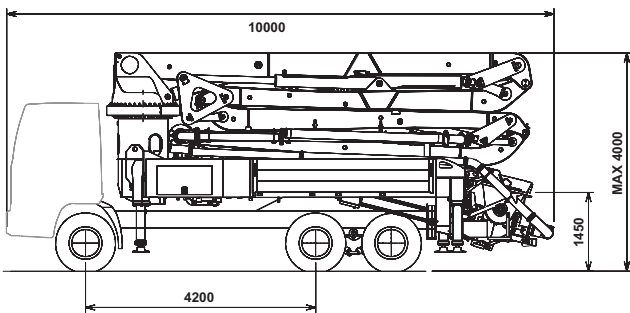
K35L XZ

TRUCK-MOUNTED CONCRETE BOOM PUMP

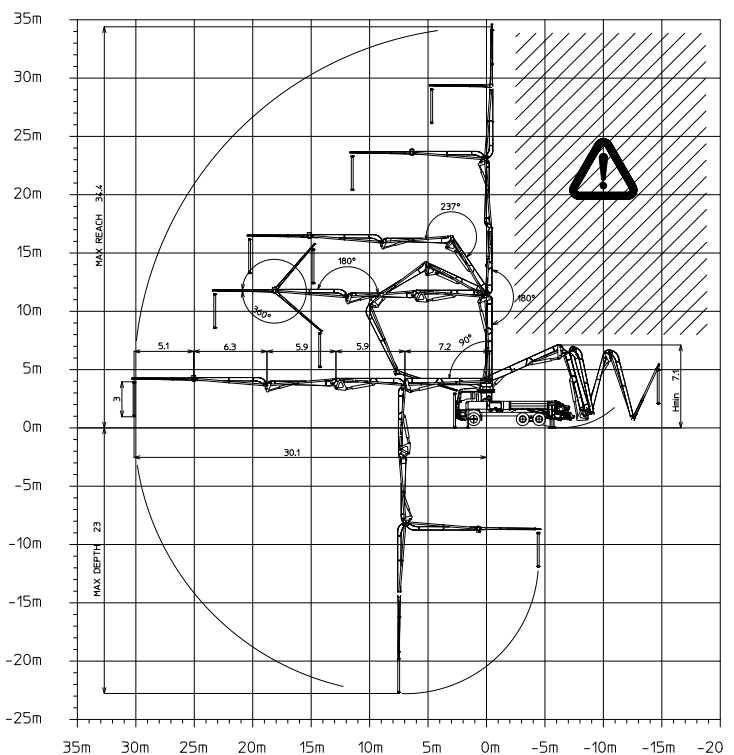
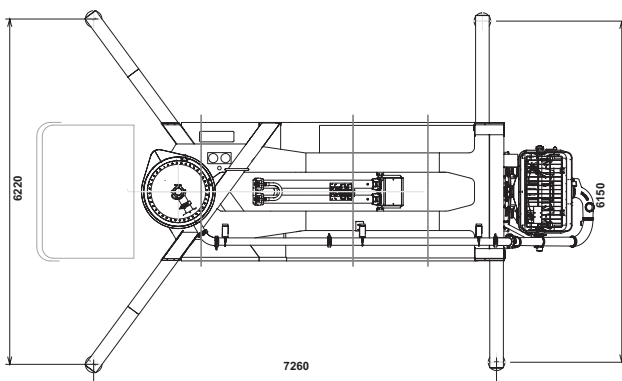
| | |
|--------------|--------------------------------|
| Placing boom | B5Z 35/31 |
| Pumping unit | HPG 1408 IF9 PA 1506/909 F8 |
| Driven by | PTO |
| Chassis | 3 - 4 axles |



Dimensions



Dimensions varying according to truck assembly



K35L XZ

Main features

- Assembling on standard 3 - 4 axles chassis
- Self-supporting frame, torsion free, FEM designed
- Front outriggers "X" style for a quick set-up and easy pump placement in narrow areas
- Fully hydraulic outrigger controls on both sides of the truck
- Placing boom B5Z 35/31, 5 sections, 5" pipeline, **Patented** continuous rotation on 5th section
- Proportional boom control
- Noiseless pumping with high performances: smooth, continuous and easy movements
- The "BFC" Best-Flex Cifa supporting system allowing just one man to change delivery pipeline easily, quickly and safely
- Concrete flow rate regulator
- Safety device on opening inspection hatch
- HPG-IF pumping unit with closed circuit and reversal flow: superb performances, high pressures and output, high reliability and easy and reduced maintenance; 9 inches S valve

alternatively:

F8 pumping system with open circuit: smooth, continuous and easy pumping, combined with high reliability

Standard equipment

- 2 Proportional radio control with two boom movement speed, synthesizer for automatic frequency search, 8 position joy stick and concrete flow rate regulator. 20 mt cable
- Emergency control pad for pumping unit HPG 1408 IF9
- Remote controlled electric vibrator placed on the concrete hopper grid
- Automatic oil lubrication system for pumping pistons on HPG 1408 IF9
- Centralized lubrication system for pumping unit
- Additional manual lubrication system for pumping unit
- Hard plastic outrigger support plates with relative housing
- Rear light on hopper
- Level readers for stabilization control
- Accessories for cleaning and pipes washing
- Aluminium concrete pipeline joints
- Double thickness concrete pipes, in high resistant steel - CIFA Long Life Pipes
- Aluminium hopper covering

Optional

- High pressure water pump for cleaning
- Air compressor for pipeline cleaning
- Centralized lubrication system for placing boom
- Air pipeline for placing boom
- Separated emergency engine kit for independent control of the hopper mixer, concrete pumping unit, boom and water pump
- Pumping unit Electronic version: HPG 1408 IF9 EPC
- Continuous boom rotation kit

TRUCK-MOUNTED CONCRETE BOOM PUMP

| | |
|---------------------|--------------------------------|
| Placing boom | B5Z 35/31 |
| Pumping unit | HPG 1408 IF9 PA 1506/909 F8 |
| Driven by | PTO |
| Chassis | 3 - 4 axles |

Pumping unit technical data

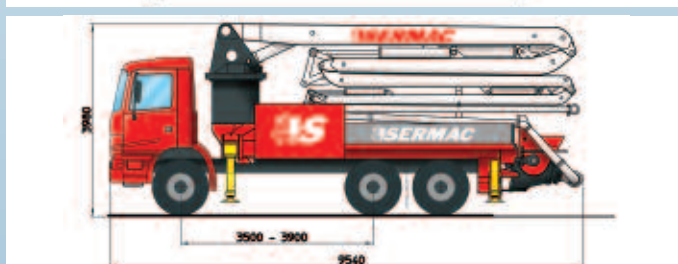
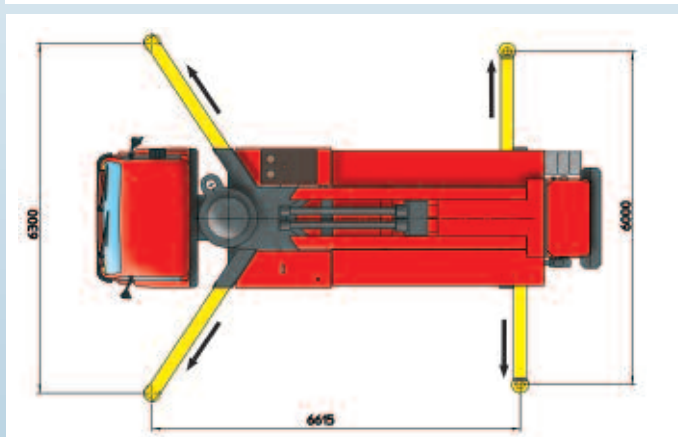
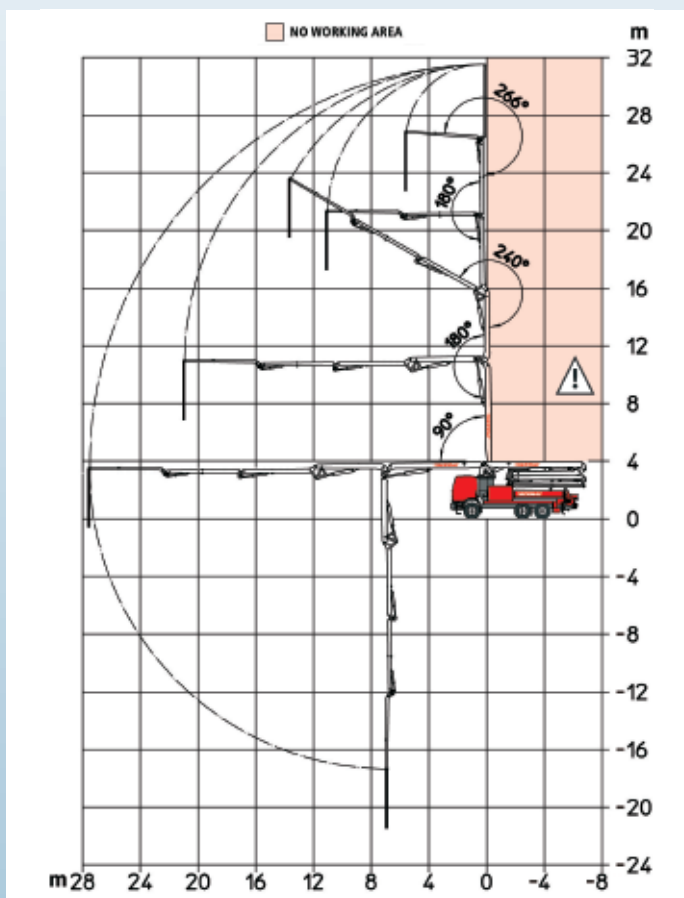
| Model | | PA | HPG |
|-------------------------------------|------------------------|-------------|----------|
| | | 1506/909 F8 | 1408 IF9 |
| Max. theoretical output | <i>m³/h</i> | 150/90 | 140 |
| Max. pressure on concrete | <i>bar</i> | 53/95 | 80 |
| Max. numbers of cycles per min. | <i>nr</i> | 30/17 | 28 |
| Concrete cylinders (diam. x stroke) | <i>mm</i> | 230x2000 | 230x2000 |
| Concrete hopper capacity | <i>l</i> | 550 | 600 |
| Hydraulic circuit | | open | closed |

Placing boom technical data

| Model | B5Z 35/31 | |
|--|-----------|------|
| Pipeline diameter | " | 5 |
| Max. vertical reach | <i>m</i> | 34,4 |
| Max. horizontal distance (from center of slewing axis) | <i>m</i> | 30,1 |
| Min. unfolding height | <i>m</i> | 7,1 |
| Section numbers | | 5 |
| 1st section opening angle | | 90° |
| 2nd section opening angle | | 180° |
| 3rd section opening angle | | 237° |
| 4th section opening angle | | 180° |
| 5th section opening angle | | 360° |
| Rotating angle | | 360° |
| End hose length | <i>m</i> | 3 |

Technical data and characteristics subject to modifications without notice

EXTREME 5Z32



GRUPPO POMPANTE › dati tecnici PUMPING UNIT › SPECIFICATIONS

| | | SCL 130A | SCL 150AHP | SCL 185A |
|--|-------------------------------------|----------------------------------|----------------------------------|----------------------------------|
| PORTATA MASSIMA TEORICA (MAX)* LATO STELO | TH. CONCRETE OUTPUT (MAX)* ROD SIDE | 130 m ³ /h (170 cy/h) | 149 m ³ /h (195 cy/h) | 184 m ³ /h (241 cy/h) |
| PRESSIONE SUL CALCESTRUZZO (MAX)* LATO STELO | CONCRETE PRESSURE (MAX)* ROD SIDE | 61 bar 884 p.s.i. | 76 bar 1102 p.s.i. | 61 bar 884 p.s.i. |
| CORSE AL MINUTO (MAX)* LATO STELO | NO. OF STROKES (MAX)* ROD SIDE | 27 min | 30 min | 37 min |
| DIAMETRO PISTONI | PISTON DIAMETER | 230 mm | 230 mm | 230 mm |
| CORSA PISTONI | STROKE LENGTH | 2000 mm | 2000 mm | 2000 mm |
| POTENZA TRAMITE | POWERED BY | PTO | PTO | PTO |
| CAPACITÀ TRAMOGGIA | CONCRETE HOPPER | 600 l | 600 l | 600 l |

BRACCIO › dati tecnici BOOM › SPECIFICATION

| | | 5Z32 |
|--------------------------|----------------------|----------------------------------|
| N. SEZIONI | NO. SECTIONS | 5 |
| TIPO APERTURA | FOLDING TYPE | Z |
| MAX ALTEZZA VERTICALE | MAX VERTICAL REACH | 31,6 m |
| MAX ESTENSIONE ORIZZ. | MAX HORIZONTAL REACH | 27,6 m |
| MAX PROFONDITÀ DI LAVORO | MAX DOWNWARD REACH | -21,5 m |
| MIN. SPAZIO DI APERTURA | UNFOLDING HEIGHT | 5950 mm |
| ROTAZIONE | ROTATION | 370° |
| ANGOLI DI APERTURA | SECTION ARTICULATION | 90° - 180° - 240° 180° - 266° |
| TUBAZIONE CLS | CONCRETE PIPELINE | Ø 125 mm |

*Non possono essere ottenuti simultaneamente
*Cannot be reach simultaneously

› Disponibili anche versioni differenti: per eventuali informazioni contattare i nostri uffici.
› Also available different models: please, don't exitate to contact our offices.

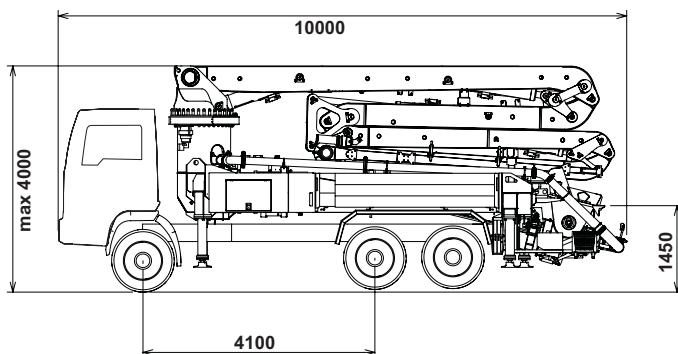
K31 L

TRUCK-MOUNTED CONCRETE BOOM PUMP

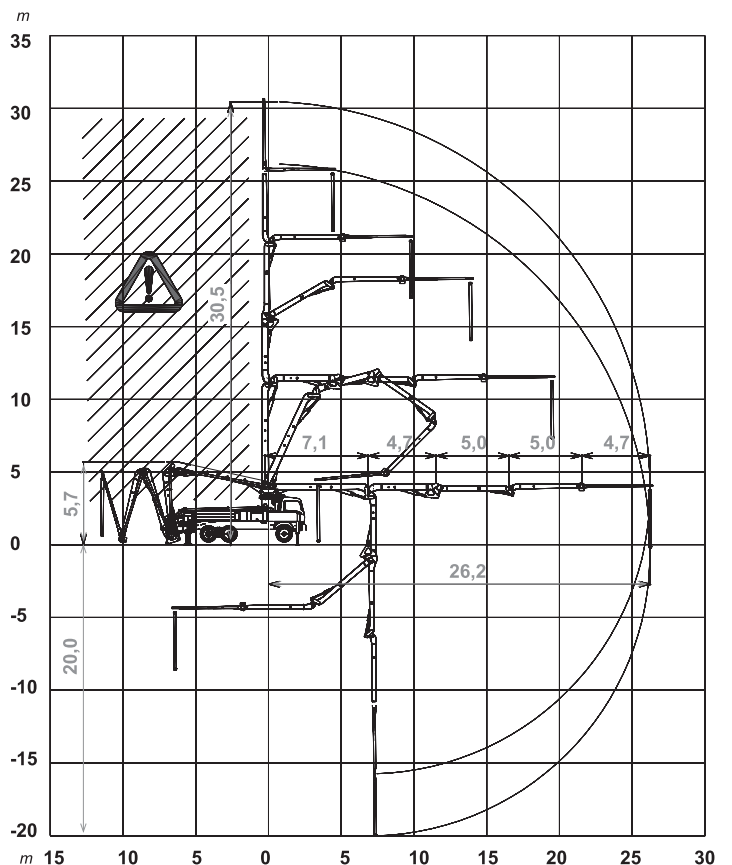
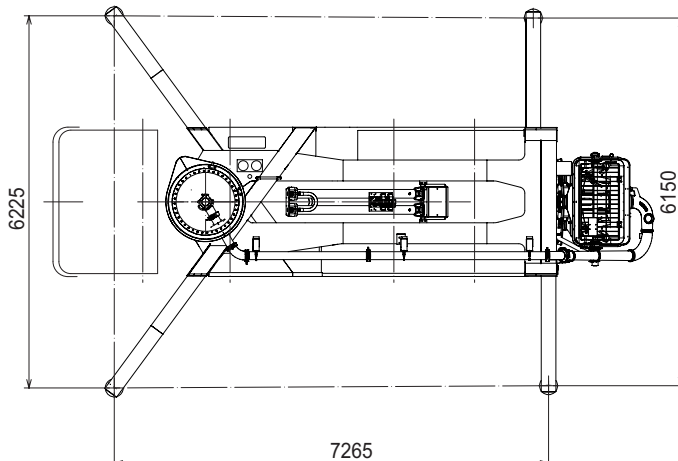
| | |
|--------------|-------------------------------|
| Placing boom | B5Z 31/27 |
| Pumping unit | PA 1506/909 F8 HPG1408 IF9 |
| Driven by | PTO |
| Chassis | 3 - 4 axles |



Dimensions



Dimensions varying according to truck assembly



K31 L

Main features

- Assembling on standard 3 or 4 axles chassis
- Self-supporting frame, torsion free, FEM designed
- Placing boom B5Z 31/27, 5 sections, 125 mm pipeline diameter, "Z" folding system and continuous rotation on 5th section
- Fully hydraulic outrigger controls on both sides of the truck
- Front outriggers "X" style for a quick set-up and easy pump placement in narrow areas
- Proportional boom control
- The "BFC" Best-Flex Cifa supporting system allowing just one man to change delivery pipeline easily, quickly and safely
- Concrete flow rate regulator
- Safety device on opening inspection hatch
- HPG-IF pumping unit with closed circuit and reversal flow: superb performances, high pressures and output, high reliability and easy and reduced maintenance; 9 inches S valve

alternatively:

F8 pumping system with open circuit: smooth, continuous and easy pumping, combined with high reliability

Standard equipment

- 2 Proportional radio control with two boom movement speed, synthesiser for automatic frequency search, 8 position joy stick and concrete flow rate regulator. 20 mt cable
- Remote controlled electric vibrator placed on the concrete hopper grid
- Centralized lubrication system for pumping unit
- Additional manual lubrication system for pumping unit
- Hard plastic outrigger support plates with relative housing
- Rear light on hopper
- Level readers for stabilization control
- Accessories for cleaning and pipes washing
- Double thickness concrete pipes, in high resistant steel - CIFA Long Life Pipes
- Aluminium hopper covering

Optionals

- High pressure water pump for cleaning
- Air compressor for pipeline cleaning
- Pumping unit Electronic version: HPG 1408 IF9 EPC
- Centralized lubrication system for placing boom
- Air pipeline for placing boom
- Separated emergency engine kit for independent control of the hopper mixer, concrete pumping unit, boom and water pump
- Continuous boom rotation kit

TRUCK-MOUNTED CONCRETE BOOM PUMP

| | |
|---------------------|-------------------------------|
| Placing boom | B5Z 31/27 |
| Pumping unit | PA 1506/909 F8 HPG1408 IF9 |
| Driven by | PTO |
| Chassis | 3 - 4 axles |

Pumping unit technical data

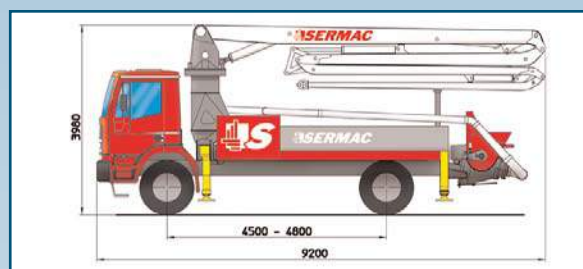
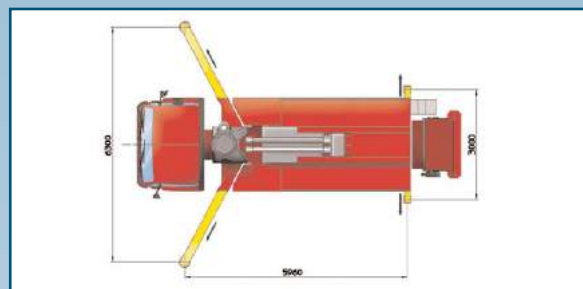
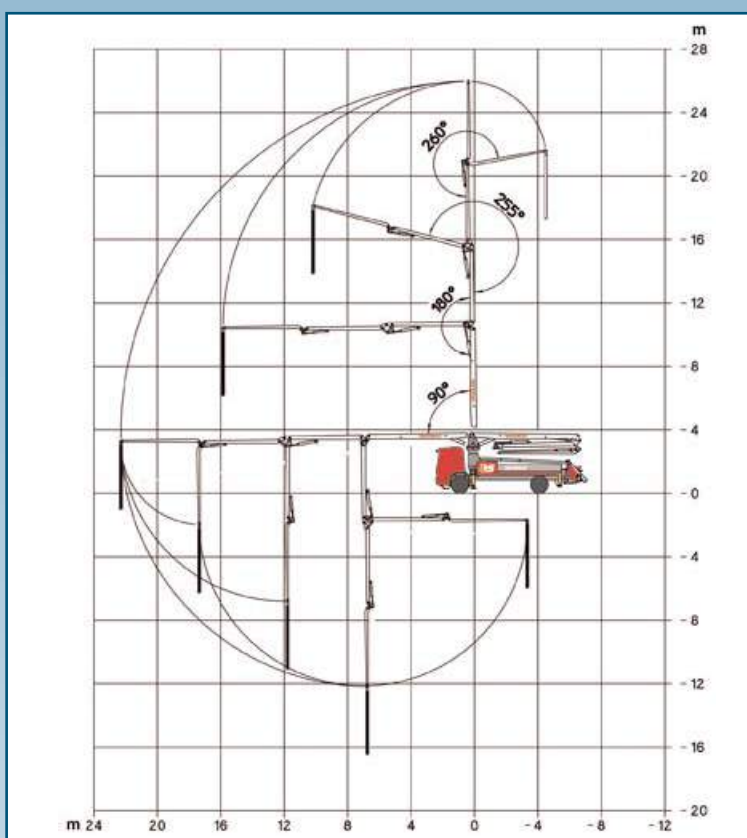
| Model | | PA 1506/909 F8 | HPG 1408 IF9 |
|----------------------------------|------------------------|----------------|--------------|
| Max. theoretical output | <i>m³/h</i> | 150/90 | 140 |
| Max. pressure on concrete | <i>bar</i> | 53/95 | 80 |
| Max. numbers of cycles per min. | <i>nr.</i> | 30/17 | 28 |
| Conc. cylinders (diam. x stroke) | <i>mm</i> | 230x2000 | 230x2000 |
| Concrete hopper capacity | <i>l</i> | 550 | 600 |
| Hydraulic circuit | | open | closed |

Placing boom technical data

| Model | | B5Z 31/27 |
|---------------------------|-----------|-----------|
| Pipeline diameter | <i>mm</i> | 125 |
| Max. vertical reach | <i>m</i> | 30,5 |
| Max. horizontal distance | <i>m</i> | 26,2 |
| Min. unfolding height | <i>m</i> | 5,7 |
| Section numbers | | 5 |
| 1st section opening angle | | 90° |
| 2nd section opening angle | | 180° |
| 3rd section opening angle | | 240° |
| 4th section opening angle | | 180° |
| 5th section opening angle | | 360° |
| Rotating angle | | 370° |
| End hose length | <i>m</i> | 4 |

Technical data and characteristics subject to modifications without notice

EXTREME 4Z26



GRUPPO POMPANTE › dati tecnici PUMPING UNIT › SPECIFICATIONS

| | | Standard SCL 130 | SCL 150 | SCL 185 |
|---|---|-------------------------------------|-------------------------------------|-------------------------------------|
| PORTATA MASSIMA TEORICA (MAX)* LATO STELO | TH. CONCRETE OUTPUT (MAX.)* ROD SIDE | 134 m ³ /h (175 cy/h) | 150 m ³ /h (196 cy/h) | 185 m ³ /h (242 cy/h) |
| PRESSIONE SUL CALCESTRUZZO (MAX)* LATO STELO | CONCRETE PRESSURE (MAX.)* ROD SIDE | 61 bar 884 p.s.i. | 76 bar 1102 p.s.i. | 61 bar 884 p.s.i. |
| CORSE AL MINUTO (MAX)* LATO STELO | NO. OF STROKES (MAX.)* ROD SIDE | 27 min | 30 min | 37 min |
| DIAMETRO PISTONI | PISTON DIAMETER | 230 mm | 230 mm | 230 mm |
| CORSA PISTONI | STROKE LENGTH | 2000 mm | 2000 mm | 2000 mm |
| POTENZA TRAMITE | POWERED BY | PTO | PTO | PTO |
| CAPACITÀ TRAMOGGIA | CONCRETE HOPPER | 600 l | 600 l | 600 l |

* Non possono essere ottenuti simultaneamente
Cannot be reach simultaneously

› Disponibili anche versioni differenti: per eventuali informazioni contattare i nostri uffici.
› Also available different models: please, don't exitate to contact our offices.

SERMAC

BRACCIO › dati tecnici BOOM › SPECIFICATIONS

| | | 4Z26 |
|--------------------------|----------------------|---------------------------|
| N. SEZIONI | NO. SECTIONS | 4 |
| TIPO APERTURA | FOLDING TYPE | Z |
| MAX ALTEZZA VERTICALE | MAX VERTICAL REACH | 26 m |
| MAX ESTENSIONE ORIZZ. | MAX HORIZONTAL REACH | 21,9 m |
| MAX PROFONDITÀ DI LAVORO | MAX DOWNWARD REACH | -17,1 m |
| MIN. SPAZIO DI APERTURA | UNFOLDING HEIGHT | 6000 mm |
| ROTAZIONE | ROTATION | 370° |
| ANGOLI DI APERTURA | SECTION ARTICULATION | 97° - 180° 255° - 260° |
| TUBAZIONE CLS | CONCRETE PIPELINE | Ø 125 mm |



PULSAR®
sistema MECBO brevettato



CONTROTELAIO Struttura di Base composta da elementi in acciaio profilato, atta a sostenere in modo stabile il braccio di distribuzione ed il gruppo pompante.

GRUPPO POMPANTE, bicilindrico, dispositivo PULSAR 4/6/7 composto dal Cono di Mandata (valvola a S) con sistema di azionamento tangenziale oleodinamico, contenuto in un corpo fuso a bagno d'olio, separato fisicamente dal flusso di calcestruzzo. Questo sistema (brevettato), consente continuità al flusso di calcestruzzo minimizzando caratteristici sussulti al braccio di distribuzione.

IMPIANTO OLEODINAMICO tipo MK2 ad alta pressione, portata variabile, a circuiti aperti (separati per controllo Braccio e Pompa).

IMPIANTO ELETTRICO e comando a distanza completo di tutte le funzioni di controllo. Movimenti del Braccio a comando proporzionale.

POTENZA MOTRICE prelevata dalla Presa di Forza dell'autotelaio
OPTIONAL: idropulitrice, compressore, vibratore, stopper, Hopper 01.K.

FRAME Base Structure composed of steel elements, to carry the hydraulic boom and the pumping group.

PUMPING GROUP, twin-cylinders, PULSAR 4/6/7 device, composed of Delivery Cone (S-valve), with a tangential and hydraulic device for driving. The group is inside a casting body, oil bath, fully isolated from the concrete. This system eliminates the boom-jumps, and allows the regular pumping of concrete.

HYDRAULIC PLAN, MK2 type, high pressure, changeable output, open circuits (separated for Boom and Pump).

ELECTRICAL PLAN and remote control with all driving functions. Proportional commands of Boom movements.

POWER connected at the Power Take-Off of Truck.

OPTIONALS: high pressure water pump, air compressor, vibrator, stopper, Hopper 01.K.

FAUX-CHÂSSIS Structure de base composé d'éléments en profilé d'acier apte à maintenir de façon stable la flèche de distribution et le groupe de pompage.

GROUPE DE POMPAGE à deux cylindres, système PULSAR 4/6/7 composé d'un tuyau pivotant en S avec système de commande tangential hydraulique composé d'un carter à bain d'huile physiquement séparé du flux de béton. Ce système autorise un écoulement continu du béton, diminuant ainsi considérablement les coups dans le bras de distribution.

CIRCUIT HYDRAULIQUE Type MK2 à haute débit variable, circuit ouvert (circuits séparés pour la pompe et pour la flèche).

Descr. Tecnica Braccio/Boom Technical Data/
Caractéristiques techniques de la flèche/
Technische Beschreibung des Auslegers

| | |
|--|-----------|
| Max Altezza Braccio/ Max Boom Height/Hauteur maximale Max Auslegerhöhe | 24 m |
| Numero di Elementi Sections Number/Nombre de bras Elementanzahl | 4 |
| Peso del Braccio Boom Weight Poids de la Flèche Mastgewicht | 5.900 Kg. |

PUISSANCE MOTRICE Tirée de la prise de mouvement du châssis porteur

OPTIONAL karcher, compresseur d'air, vibreur, stopper, Hopper 01.K.

HILFSRAHMEN (Grundkonstruktion). Bestehend aus Stahlprofilelementen ist er in der Lage, den Ausleger für die Betonverteilung und die Pumpengruppe stabil abzustützen.

PUMPENGRUPPE Zweizylindrisch, vorrichtung PULSAR 4/6/7, bestehend aus druckseitigem Konus (S-Ventil) mit hydraulischem Tangential-Antriebesystem.

Untergebracht in einem Gußteilkörper in Ölbad. Vom Betonfluß getrennt. Dieses System gestattet einen kontinuierlichen Betonfluß getrennt. Dieses System gestattet einen kontinuierlichen Betonfluß bei gleichzeitiger Reduzierung der charakteristischen Stotterbewegungen am Ausleger auf ein Minimum.

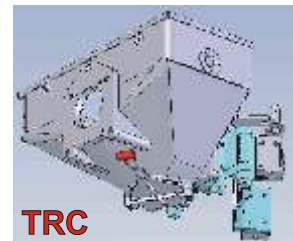
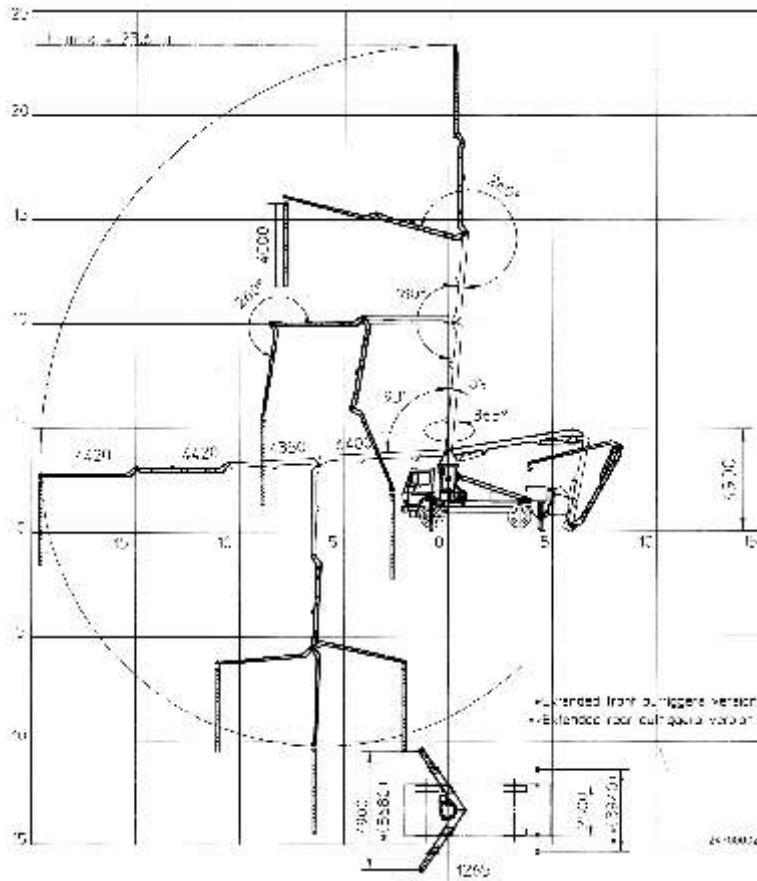
HYDRAULIKANLAGE, Typ MK2, mit Hochdruck, verstellbarer Fördermenge und mit offenen Kreisläufen (separat für Ausleger - und Pumpensteuerung).

ELEKTRISCHE ANLAGE und Fernbedienung, Komplett mit allen Steuerfunktionen.

Auslegerbewegungen mit Proportionalsteuerung.

ANTRIEBSLEISTUNG geliefert von Nebenantrieb des Fahrzeugs.

ZUBEHÖRTEILE: Hydroputzereinmaschine, Kompressor, Rüttler, Stopper, Hopper 01.K.

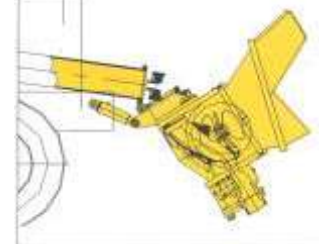


TRC



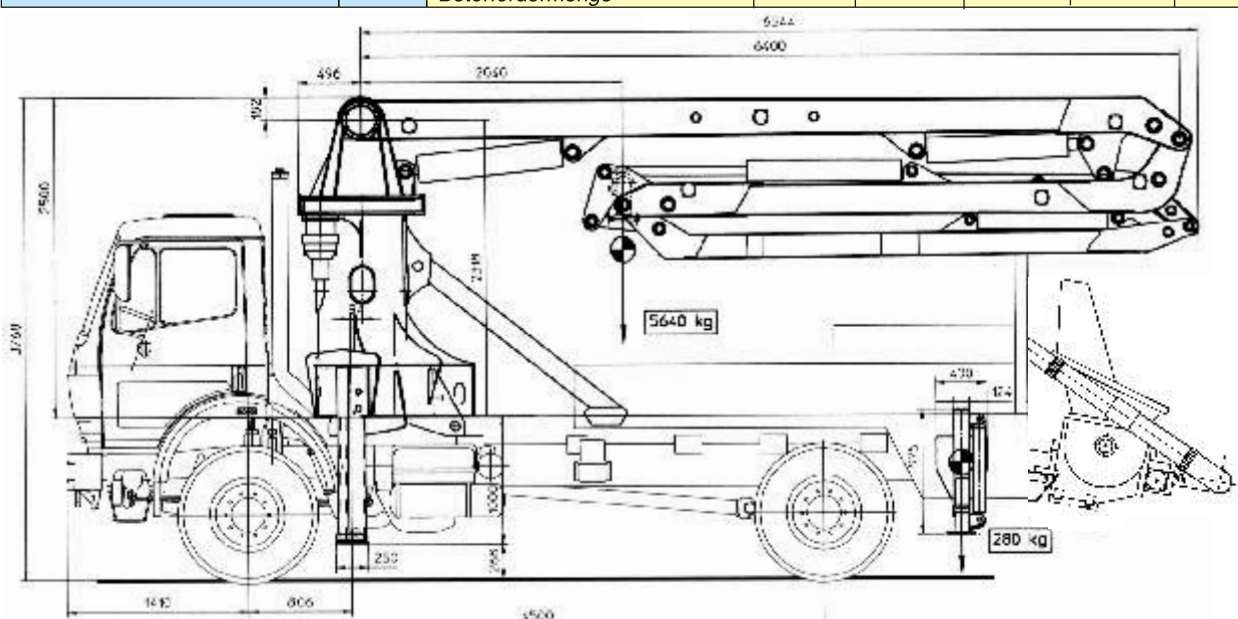
TRC

HOPPER 01.K

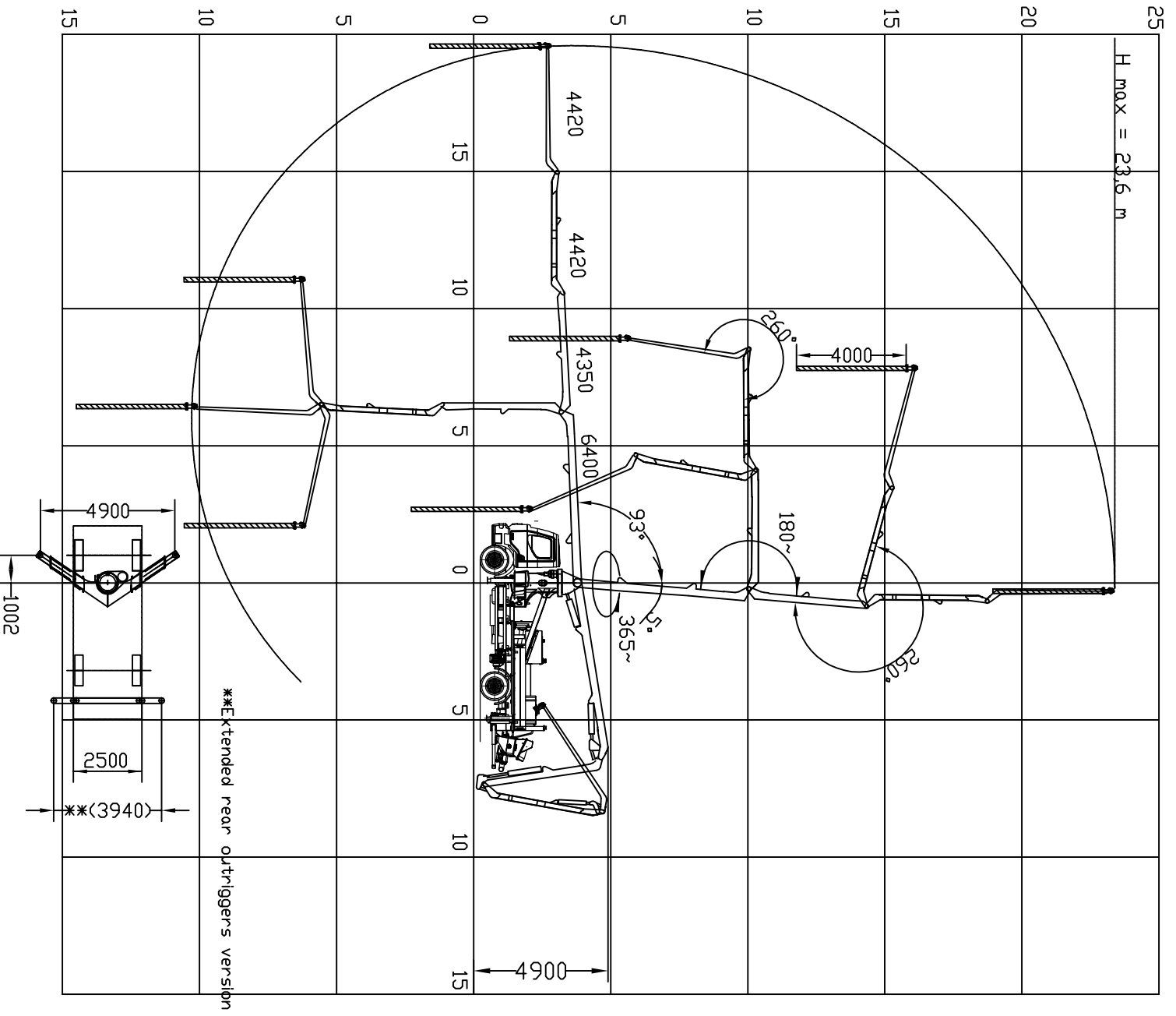


Brevettato - MECBO system

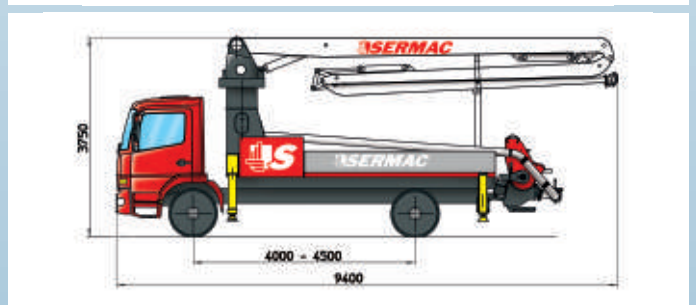
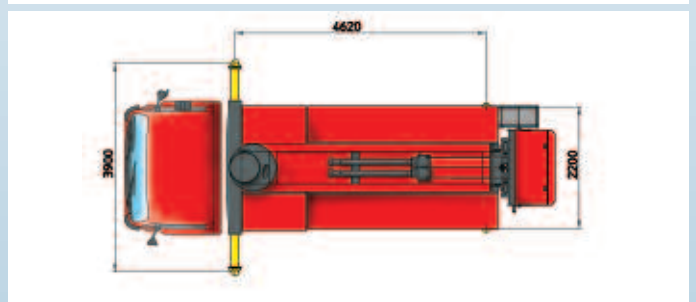
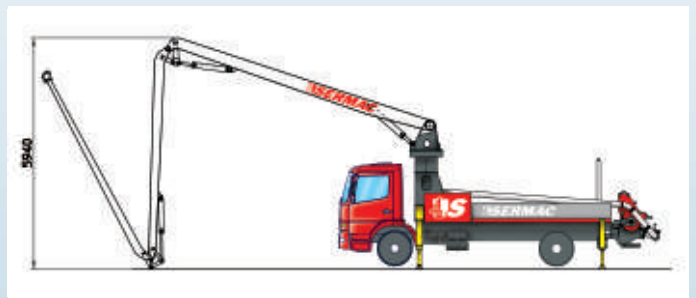
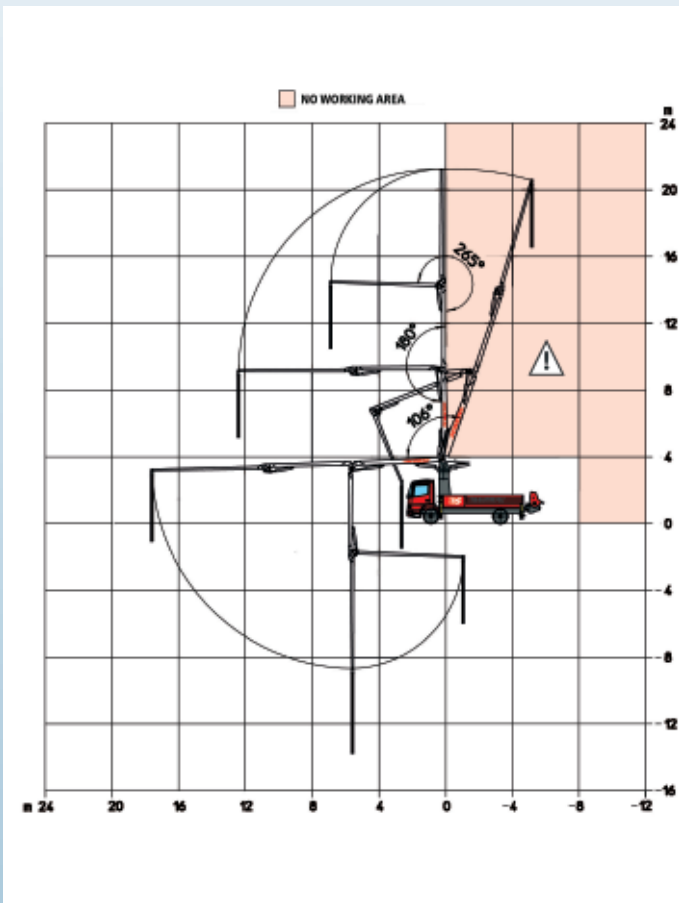
| BRACCIO DISTRIBUTORE/DISTRIBUTOR BOOM/ FLECHE DISTRIBUTEUR/AUSLEGER FÜR BETONVERTEILUNG | | GRUPPO POMPANTE/PUMPING GROUP/ GROUPE DE POMPAGE/PUMPENGRUPPE | | | | | |
|--|----------|---|----------------------------------|----------------------------------|-----------------------------------|-----------------------------------|-----------------------------------|
| Diametro Tubazione/Pipeline Diameter Diamètre de la tuyauterie Leitungsdurchmesser | 125 mm | Pompa Tipo/ Pump Type Pompe type/Pump Typ | P4.65 | P6.90 | P6.110 | P7.120K | P7.150K |
| Raggio orizzontale/Horizontal Reach Portée horizontale/ Waagrechter Radius | 19,60 ml | Diametro dei cilindri/Cylinders diameter Diamètre cylindres/ Durchmesser der Zylinder | 180 mm | 200 mm | 200 mm | 230 mm | 230 mm |
| Altezza Massima/Max Vertical Reach Portée vertical Max Höhe | 23,6 ml | Corsa/Stroke Course Hub | 1400 mm | 1800 mm | 2000 mm | 2000 mm | 2000 mm |
| Rotazione Torretta Slewing Range/Rotation de la tourelle Säulendrehung | 365° | Diametro Uscita/Outlet Diameter Diamètre des cylindres Ausgangsdurchmesser | 5" 125 mm | 6" 150 mm | 6" 150 mm | 6" 150 mm | 6" 150 mm |
| Pressione Oleodinamica Hydr. Work. Pressure Pression hydraulique/Hydraulikdruck | 340 Bar | Press. Calcestr. Concrete Press./Pression sur béton Betondruck | 50/80 Bar | 50/80 Bar | 50/80 Bar | 50/80 Bar | 50/80 Bar |
| Lung. Tubo Terminale End Hose Length/Longuer du flexible Länge des Endschlandes | 4 mt | Portata Calcestr. Concrete Output/Débit Betonfördermenge | 35 m³/h 26 cicl- cycles/1' | 90 m³/h 26 cicl- cycles/1' | 110 m³/h 29 cicl- cycles/1' | 120 m³/h 24 cicl- cycles/1' | 145 m³/h 29 cicl- cycles/1' |



I presenti dati hanno valore indicativo. Con l'evolversi della tecnologia, i dati esposti potranno subire modifiche senza preavviso. Le richieste tecniche specifiche debbono essere sempre accettate dalla nostra Direzione con conferma scritta.
Les présents données ont valeur indicatif. Avec l'évolution de la technologie, les détails mentionnés pourront être modifiés sans aucun avis. Toutes les demandes techniques spécifiques doivent être toujours acceptées par notre Direction avec confirmation écrite.
The present technical data have indicative value. Owing to the technology development, all above mentioned details may be changed without any notice. All specific technical requests must be always accepted from our Management by written confirmation.
Die aufgeführten technischen Daten dienen ausschließlich dem Vergleich. Unsere Technologie wird ständig weiterentwickelt. Wir behalten uns jederzeit vor, die Daten jederzeit ohne Information zu ändern. Alle technischen Anfragen oder Änderungen müssen immer von unserer Firmenleitung schriftlich bestätigt werden.



EXTREME 3Z22



GRUPPO POMPANTE › dati tecnici PUMPING UNIT › SPECIFICATIONS

| | | SCH 60 | SCM 80 | SCM 100 |
|--|-------------------------------------|--------------------------------|---------------------------------|----------------------------------|
| PORTATA MASSIMA TEORICA (MAX)* LATO STELO | TH. CONCRETE OUTPUT (MAX)* ROD SIDE | 60 m ³ /h (78 cy/h) | 80 m ³ /h (104 cy/h) | 100 m ³ /h (130 cy/h) |
| PRESSIONE SUL CALCESTRUZZO (MAX)* LATO STELO | CONCRETE PRESSURE (MAX)* ROD SIDE | 69 bar 999 p.s.i. | 61 bar 884 p.s.i. | 61 bar 884 p.s.i. |
| CORSE AL MINUTO (MAX)* LATO STELO | NO. OF STROKES (MAX)* ROD SIDE | 28 min | 20 min | 25 min |
| DIAMETRO PISTONI | PISTON DIAMETER | 180 mm | 230 mm | 230 mm |
| CORSA PISTONI | STROKE LENGTH | 1400 mm | 1600 mm | 2000 mm |
| POTENZA TRAMITE | POWERED BY | PTO | PTO | PTO |
| CAPACITÀ TRAMOGGIA | CONCRETE HOPPER | 600 l | 600 l | 600 l |

BRACCIO › dati tecnici BOOM › SPECIFICATIONS

| | | 3Z22 |
|--------------------------|----------------------|---------------------|
| N. SEZIONI | NO. SECTIONS | 3 |
| TIPO APERTURA | FOLDING TYPE | Z |
| MAX ALTEZZA VERTICALE | MAX VERTICAL REACH | 21,65 m |
| MAX ESTENSIONE ORIZZ. | MAX HORIZONTAL REACH | 17,8 m |
| MAX PROFONDITÀ DI LAVORO | MAX DOWNWARD REACH | -11,5 m |
| MIN. SPAZIO DI APERTURA | UNFOLDING HEIGHT | 5940 mm |
| ROTAZIONE | ROTATION | 370° |
| ANGOLI DI APERTURA | SECTION ARTICULATION | 106° - 180° 265° |
| TUBAZIONE CLS | CONCRETE PIPELINE | Ø 125 mm |

*Non possono essere ottenuti simultaneamente
*Cannot be reach simultaneously

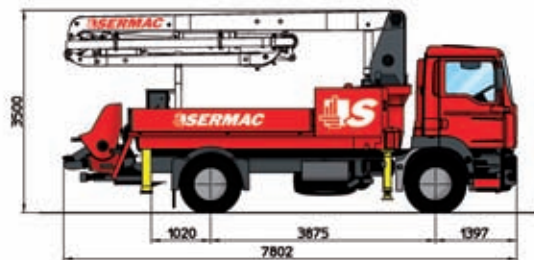
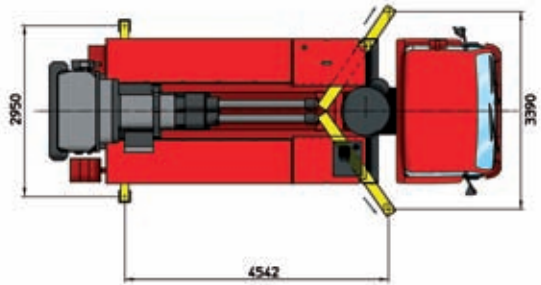
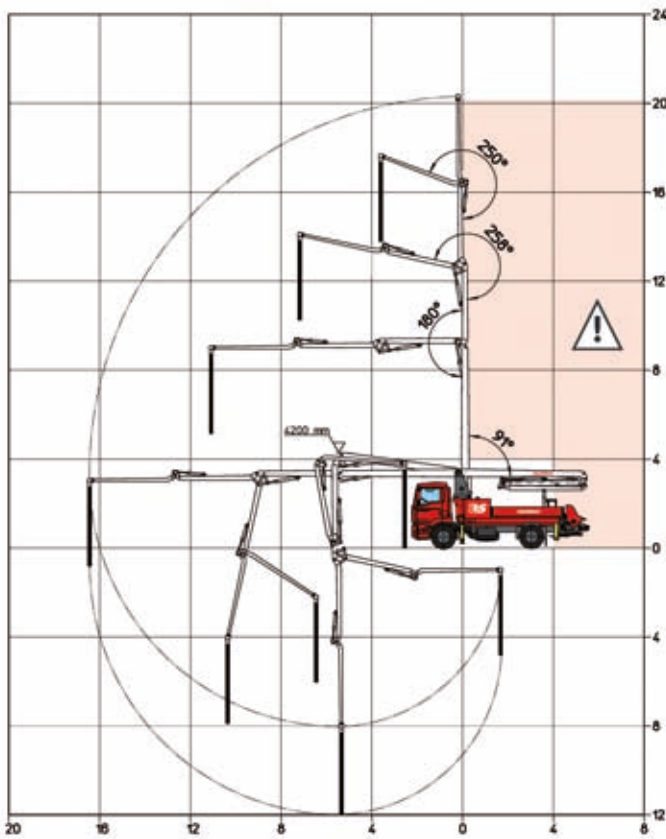
› Disponibili anche versioni differenti: per eventuali informazioni contattare i nostri uffici.
› Also available different models: please, don't exitate to contact our offices.

ZENITH 4ZR21

“SERMAC CITY-PUMP”



NO WORKING AREA



PUMPING UNIT - specifications

| | SCH60A | SCM80AHP | SCM100A |
|--|-----------------------------------|------------------------------------|-------------------------------------|
| TH. CONCRETE OUTPUT (MAX)* ROD SIDE | 60 m ³ /h (78 cy/h) | 83 m ³ /h (108 cy/h) | 100 m ³ /h (130 cy/h) |
| CONCRETE PRESSURE (MAX)* ROD SIDE | 69 bar 999 p.s.i. | 81 bar 1152 p.s.i. | 61 bar 884 p.s.i. |
| NUMBER OF STROKES (MAX)* ROD SIDE | 28 min | 28 min | 25 min |
| PISTON DIAMETER | 180 mm | 200 mm | 230 mm |
| STROKE LENGHT | 1400 mm | 1600 mm | 1600 mm |
| POWERED BY | PTO | PTO | PTO |
| CONCRETE HOPPER | 400 l | 600 l | 600 l |

BOOM - specifications

| | 4ZR21 |
|----------------------|---------------------------|
| NUMBER OF SECTIONS | 4 |
| FOLDING TYPE | ZR |
| MAX VERTICAL REACH | 20,3 m |
| MAX HORIZONTAL REACH | 16,30 m |
| MAX DOWNWARD REACH | -12 m |
| UNFOLDING HEIGHT | 4220 mm |
| ROTATION | 370° |
| SECTION ARTICULATION | 90° - 180° 258° - 250° |
| CONCRETE PIPELINE | Ø 125 mm |

*Cannot be reach simultaneously

Also available different models: please, don't exitate to contact our offices

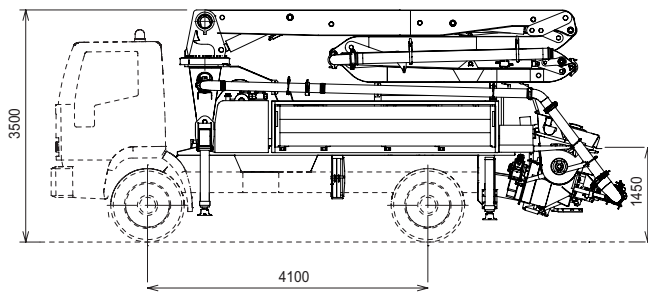
K 20 L

TRUCK-MOUNTED CONCRETE BOOM PUMP

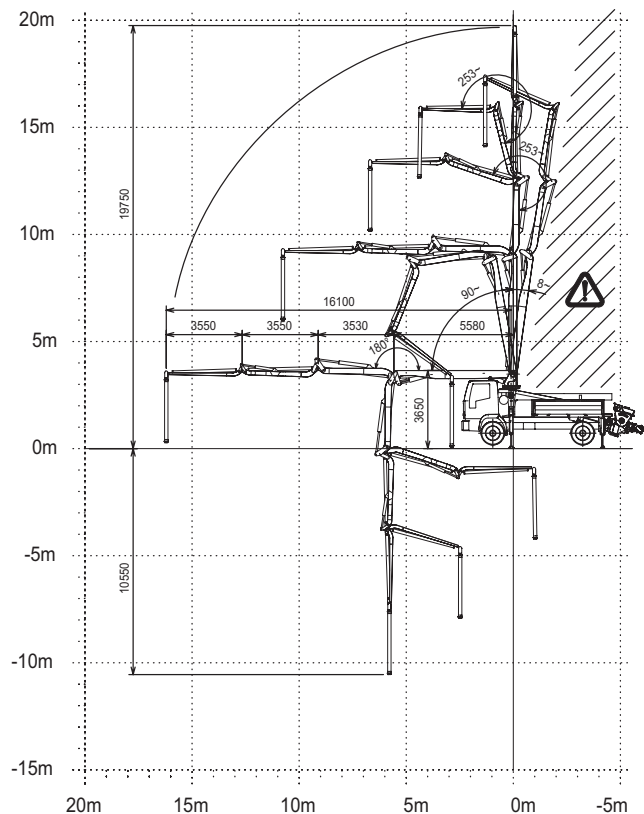
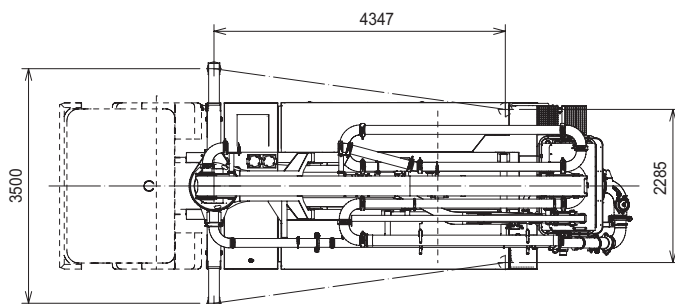
| | |
|--------------|------------|
| Placing boom | B4ZR 20/16 |
| Pumping unit | PA 709 S8 |
| Driven by | PTO |
| Chassis | 2 axles |



Dimensions



Dimensions varying according to truck assembly



K 20 L

Main features

- Assembling on standard 2 axles chassis
- Self-supporting frame, torsion free, FEM designed
- Placing boom B4ZR 20/16, 4 sections, pipeline diameter 125 mm, "Zed-R" mixed folding system
- Quick boom release system
- Fully hydraulic outrigger controls on both sides of the truck
- Front extensible and rear fixed outriggers for a quick set-up and an easy placement in narrow areas
- Proportional boom control allowing the operator to control more placing boom sections simultaneously
- The "BFC" Best-Flex Cifa supporting system allowing just one man to change delivery pipeline easily, quickly and safely
- Concrete flow rate regulator
- Quiet pumping with high performances: smooth, continuous and easy movements
- Safety device on opening inspection hatch

Standard equipment

- 2 Proportional radio control with two boom movement speed, synthesiser for automatic frequency search, 8 position joystick and concrete flow rate regulator. 20 mt cable
- Remote controlled vibrator on the concrete hopper grid
- Centralized lubrication system for pumping unit
- Additional manual lubrication system for pumping unit
- Hard plastic outrigger support plates with relative housing
- Rear light on hopper
- Level readers for stabilization control
- Accessories for cleaning and pipes washing
- Hose carrier for 12 hoses - 3m length and collar
- Air compressor for pipeline cleaning
- Double thickness concrete pipes, in high resistant steel - CIFA Long Life Pipes
- Aluminium hopper cover

Optional

- High pressure water pump
- Centralized lubrication system for placing boom
- Air pipeline for placing boom
- Additional hose carrier for 18 DN65 hoses - 4,5m length

TRUCK-MOUNTED CONCRETE BOOM PUMP

| | |
|--------------|------------|
| Placing boom | B4ZR 20/16 |
| Pumping unit | PA 709 S8 |
| Driven by | PTO |
| Chassis | 2 axles |

Pumping unit technical data

| Model | | PA 709 S8 |
|----------------------------------|------------------------|-----------|
| Max. theoretical output | <i>m³/h</i> | 70 |
| Max. pressure on concrete | <i>bar</i> | 85 |
| Max. numbers of cycles per min. | <i>nr.</i> | 25 |
| Conc. cylinders (diam. x stroke) | <i>mm</i> | 200x1500 |
| Concrete hopper capacity | <i>l</i> | 550 |

Placing boom technical data

| Model | | B4ZR 20/16 |
|---------------------------|-----------|------------|
| Pipeline diameter | <i>mm</i> | 125 |
| Max. vertical reach | <i>m</i> | 19,75 |
| Max. horizontal distance | <i>m</i> | 16,1 |
| Min. unfolding height | <i>m</i> | 3,95 |
| Section numbers | <i>n°</i> | 4 |
| 1st section opening angle | | 90°/+8° |
| 2nd section opening angle | | 180° |
| 3rd section opening angle | | 253° |
| 4th section opening angle | | 253° |
| Rotating angle | | 370° |
| End hose length | <i>m</i> | 3 |

Technical data and characteristics subject to modifications without notice

A compact, fully featured mobile concrete pump designed to provide a cost effective pumping solution to the small end concrete market

Introduction
The machine and its features
Summary of key benefits
Standard equipment
Specification

The **minipump**



from **minipump** (UK) Ltd

Introduction

Based on an Iveco Eurocargo 7.5T chassis this machine was conceived from the experience gained within our own pumping company where our boom pumps were often carrying out pipeline pours because of access problems for both the boom and sometimes the truck itself.

Booms could often not be raised due to trees and overhead cables; outriggers were often unable to be opened due to obstructions or merely due to the fact that they would block the road. Equally our minimix trucks found it difficult to discharge into these truck mounted pumps as the hopper was just a little too high for them.

This machine fills the gap in the concrete pumping market between small boom pumps and trailer mounted static pumps and allows readymix trucks of all sizes to discharge S2 and above consistence concrete easily.

It is designed for placing concrete in those places where only a pipeline is needed (or can access) and where there may be restricted access for the vehicle.

The machine is fully featured and carries all the accessories necessary for it to be self sufficient and unlike most pumps the cleaning system ensures there is little waste for the customer to deal with after the job is done.

It provides a cost effective solution for pumping small quantities and as a consequence will develop its own niche in the small builder / DIY market.

Professionally engineered by our Italian pump partners the pump comes with a full 12 month parts warranty and the chassis comes with the manufacturers standard 3 year 100,000 mile comprehensive warranty.

The machine and its features

The pump is built within the Iveco Eurocargo 7.5T chassis and has a 4 litre diesel engine, which produces 177bhp. This engine is therefore ideal for both solid road performance and pumping performance.

The concrete pump is powered conventionally by hydraulics run from the main engine through a power take off gearbox mounted in line with the prop shaft. The pump is a powerful unit which can pump up to 40m³ of concrete per hour and can achieve 70 bar pumping pressure. This means that in general terms it is able to pump over 100m vertically and over 200m horizontally. Pumping speed is totally variable and can be slowed to a trickle feed. This pump is therefore also ideal for pumping self leveling screed as well as concrete.

Apart from the manual pump control console on the rear of the vehicle (picture right), the pump can be (and will usually be) operated using the radio remote control box. This fully functional remote control comprises stop and start, pump forward and reverse, pump speed control, vibrator on the hopper, horn for signals to the truck mixer operator and emergency stop (picture bottom right). In this way the operator can stand with the customer ensuring that the concrete is delivered to his requirements.

The pump has a conventional S valve changeover arrangement incorporating the unique Pulsar system which is ultra smooth in operation and rear mounted for easy access for maintenance should it be required (picture right).

Most moving parts attached to the hopper are lubricated automatically from the hydraulic system.

The hopper has a splash cover, hazard beacon and a light to assist when cleaning. For additional safety the hopper is fitted with a safety cut out device which stops the pump should the hopper grille be lifted during pumping operation.



3
i
n
i
p
u
m
p

All concrete delivery pipes (steel and rubber flexibles) are stowed neatly along each side of the vehicle which has drop down sides for easier access. In addition there is a top box for other accessories and separate clamp stools (pictured right and bottom right).



There is a 500 litre water tank which gives ample storage should it be needed.

Also driven from the hydraulic system there are both a high pressure water pump with lance (16 Bar) and a 1000 litre / minute air compressor for use in cleaning the pump and the line of concrete at the end of the job. The picture on the immediate right shows the air compressor neatly located behind the side protection bars.



There is further storage available under the chassis where there is a lockable drivers box for spare clothes etc. and just in front of the rear step (shown in the picture far opposite) a lockable steel accessory box.



Summary of key benefits

- ✓ Comes fitted with 30m of lightweight steel pipes as standard plus two 3m flexible rubber pipes
 - ✓ Falls into the plant category for vehicle licensing purposes and therefore benefits from lower road fund tax (correct at the time of this publication Jan 2007)
 - ✓ Lower fuel costs as it can be run on lower tax red diesel (correct at the time of this publication Jan 2007)
 - ✓ Significantly reduced capital cost compared to larger truck mounted boom pumps
 - ✓ Lower running cost than any other truck mounted pump
 - ✓ Can be operated by one person
 - ✓ 12 months parts warranty on the pump unit
 - ✓ 3 year comprehensive warranty on the chassis
- ✓ A robust compact pump able to access difficult areas
 - ✓ Super smooth pumping action due to Pulsar changeover
 - ✓ Fully self sufficient and self contained having all necessary equipment already fitted
 - ✓ Fully radio remote controlled
 - ✓ Fast and efficient with an extremely powerful pump and engine. Can pump over 100m vertically and over 200m horizontally
 - ✓ Versatile - it can be used for concrete and flowing screeds
 - ✓ Reduced waste due to the special cleaning equipment included

Standard Equipment

The machine comes with the following equipment as standard

- Choice of cab colours from the standard Iveco range. Choice of two colours for the pump
- 10 no 100mm x 3m lightweight steel pipes, 2 no 100mm x 3m rubber flexible pipes, 1 no reducer, 1 no 45 degree elbow, 2 no 90 degree elbow . Clamps and rubber seals to suit
- High pressure water lance for connection to the high pressure water pump
- Air cleaning canister and ball catcher, 2 no sponge balls
- Rear hopper cover, hopper mounted hazard beacon and hopper inspection light
- Operating manual and instructions
- CE certification

Specification*

Iveco Daily

| | |
|----------------------|-----------|
| Wheelbase | 3700mm |
| Overall length | 7100mm |
| Rear overhang | 1150mm |
| Height of steel deck | 950mm |
| Width | 2300mm |
| Max Weight | 7500Kgs |
| Engine | 4.0 Litre |

Pump

| | |
|-------------------|-------------------------|
| Cylinder Diameter | 180mm |
| Piston Stroke | 1000mm |
| Outlet Diameter | 125mm |
| Hopper height | 1250mm |
| Max pump pressure | 70 Bar |
| Max output | 40m ³ / hour |

* Please note specifications and designs may be altered at any time

minipump (UK) Ltd
c/o Wright Minimix Ltd
2 St Ivel Way
Warmley
Bristol
BS30 8TY
Tel: 01179 582090
Fax: 01179 671673
gordon@wrightminimix.co.uk
www.wrightminimix.co.uk



minipump